



**COBB FIBRE OTTICHE**

**LIGHTING WITH  
LED PROFILES**

**CATALOGUE  
2024**



# LIGHTING WITH LED PROFILES



# ALL OUR LED PROFILES



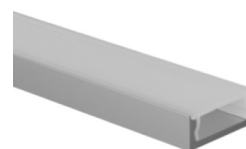
RECTANGULAR LINEAR PROFILE "LARGE"  
COD. PRE-R16/02



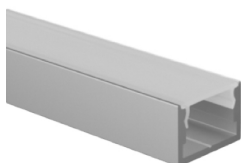
ANGULAR SQUARE PROFILE  
COD. PRE-A14/02



RECTANGULAR FLAT PROFILE "MICRO"  
COD. PRE-R09/01



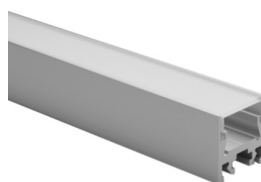
RECTANGULAR FLAT PROFILE  
COD. PRE-R15/01



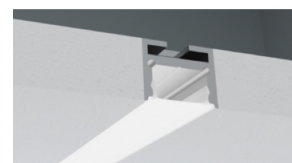
RECTANGULAR LINEAR PROFILE  
COD. PRE-R16/01



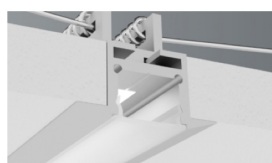
BIG PROFILE FOR TOTAL RECESSING "LARGE"  
COD. PRE-RS37/01



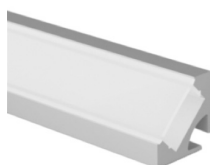
RECTANGULAR CEILING PROFILE  
COD. PRE-R26/01



PROFILE FOR TOTAL RECESSING  
COD. PRE-RS16/01



LINEAR PROFILE FOR RECESSING  
COD. PRE-RS27/01



ANGULAR FLAT PROFILE  
COD. PRE-A12/01



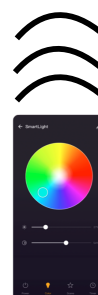
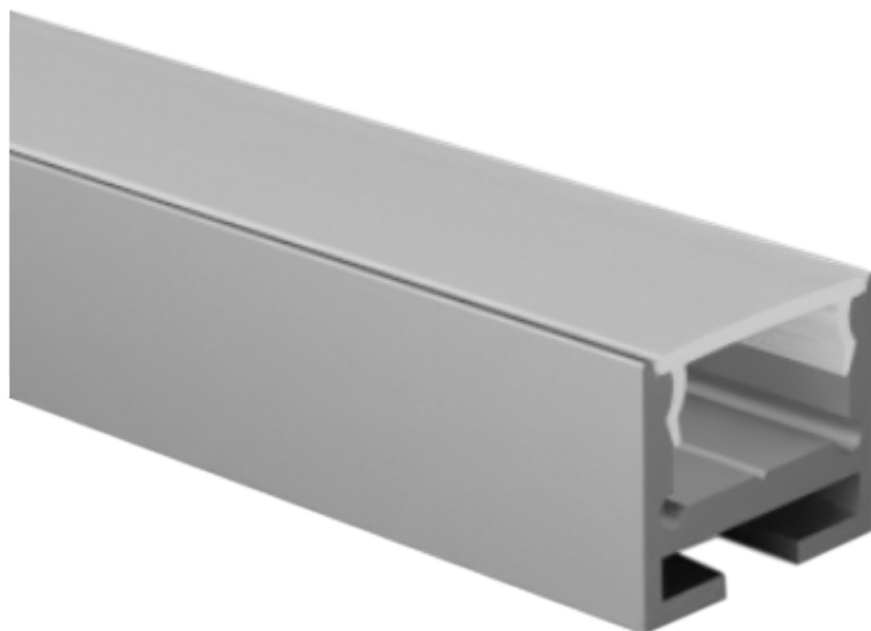
ANGULAR ROUND PROFILE  
COD. PRE-A14/02



WALL CORNER PROFILE  
COD. PRE-A26/01

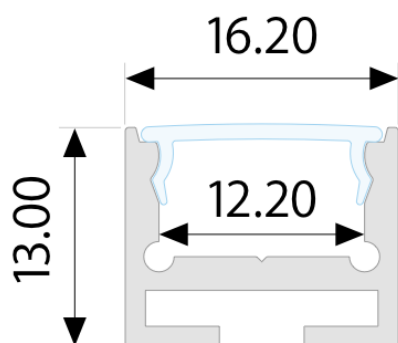


LINEAR WALL PROFILE  
COD. PRE-RP110/01

**RECTANGULAR LINEAR PROFILE "LARGE"**  
**MODEL "PRE-R16/02"**


Profile in silver-grey, black, gold and white painted anodized aluminum, cut to measure on your needs. Excellent profile for visible installations, or for room lighting with housing in perimeter veils. Cover in opal polycarbonate.

Supplied for installation complete with closing caps, opal cover and clip. With the profile we can also supply LED strips with white light or RGB+W, with the appropriate power supplies depending on the power and type of LEDs inserted.

**dimensions**

**finishes available**
**gold**

**white**

**silver**

**black**




**RECTANGULAR LINEAR PROFILE "LARGE"  
 MODEL "PRE-R16/02"**


The profiles are supplied cut to size, maximum length 3m, ready for installation, with standard on-off or dimmable power supplies for white light. The RGB+W strips can be supplied with control via RF remote control, wall touch panel, dmx, dali, and with the Google Assistance, Alexa and Tuya apps for smartphone control.

## accessories

opal  
cover  
CV-R16/02-OP



cap  
with hole  
TP-R16/02-T1



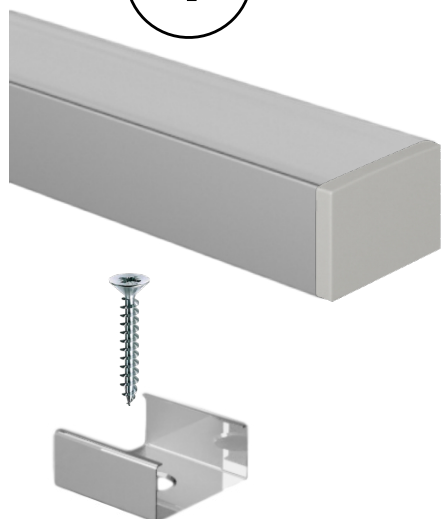
closed  
cap  
TP-R16/02-T2



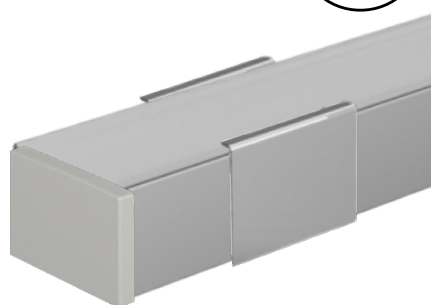
clip  
CL-R16/02



## installation

**1**


fixing the clip  
with a screw

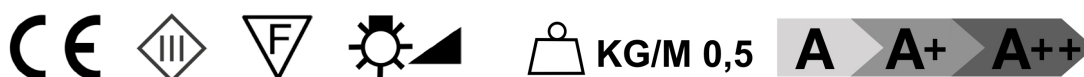
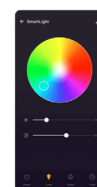
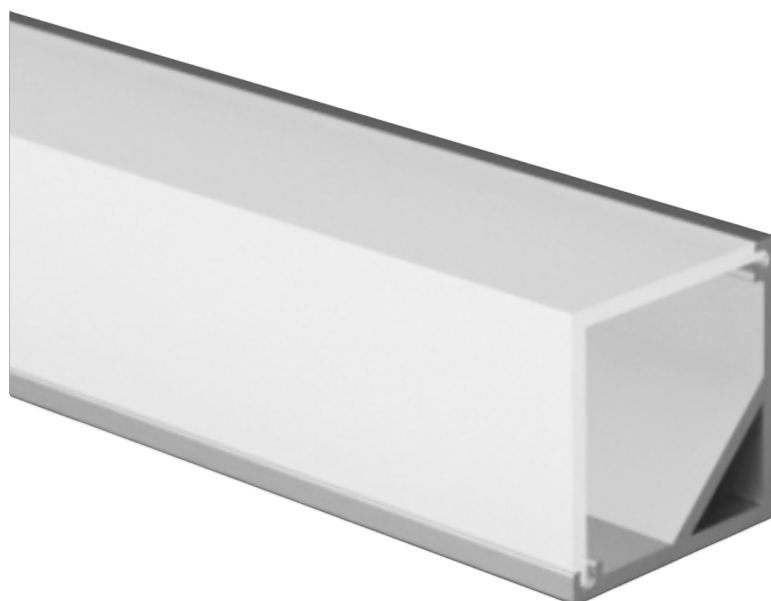
**2**


attack the profile  
to the clip

The profiles are supplied cut to measure, maximum length 3m, complete with diffuser + caps and fixing clips.

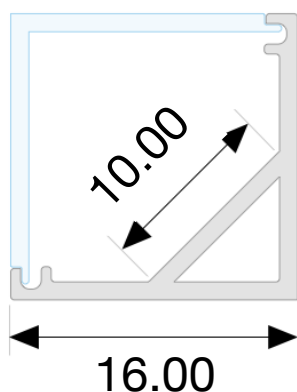
Upon request, the profiles are supplied with LED strips chosen from White / Dynamic White / RGB / RGB+W and light control modules managed by the following systems:

TYPE LED	RF REMOTE CONTROL / PANEL	DMX	DALI	ALEXA/GOOGLE HOME/TUYA	PUSH	1-10V 0-10V
WHITE LED	✓	✓	✓	✓	✓	✓
DYNAMIC WHITE LED	✓	✓	✓	✓		
RGB LED	✓	✓	✓	✓		
RGB+W LED	✓	✓	✓	✓		



Profile in silver-grey, black, gold and white painted anodized aluminum, cut to measure on your needs. Excellent profile for visible installations, or for ambient lighting with the housing in perimeter veils, to direct the light upwards or towards the interior of the room, obtaining excellent light reflection without any loss, thanks to the inclination at 45° of the light. Cover in opal polycarbonate. Supplied for installation complete with closure caps, opal cover and clip. With the profile we can also supply LED strips with white light or RGB+W, with the appropriate power supplies depending on the power and type of LEDs inserted.

### dimensions

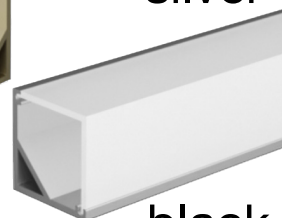


### finishes available

gold



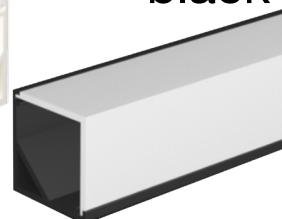
silver



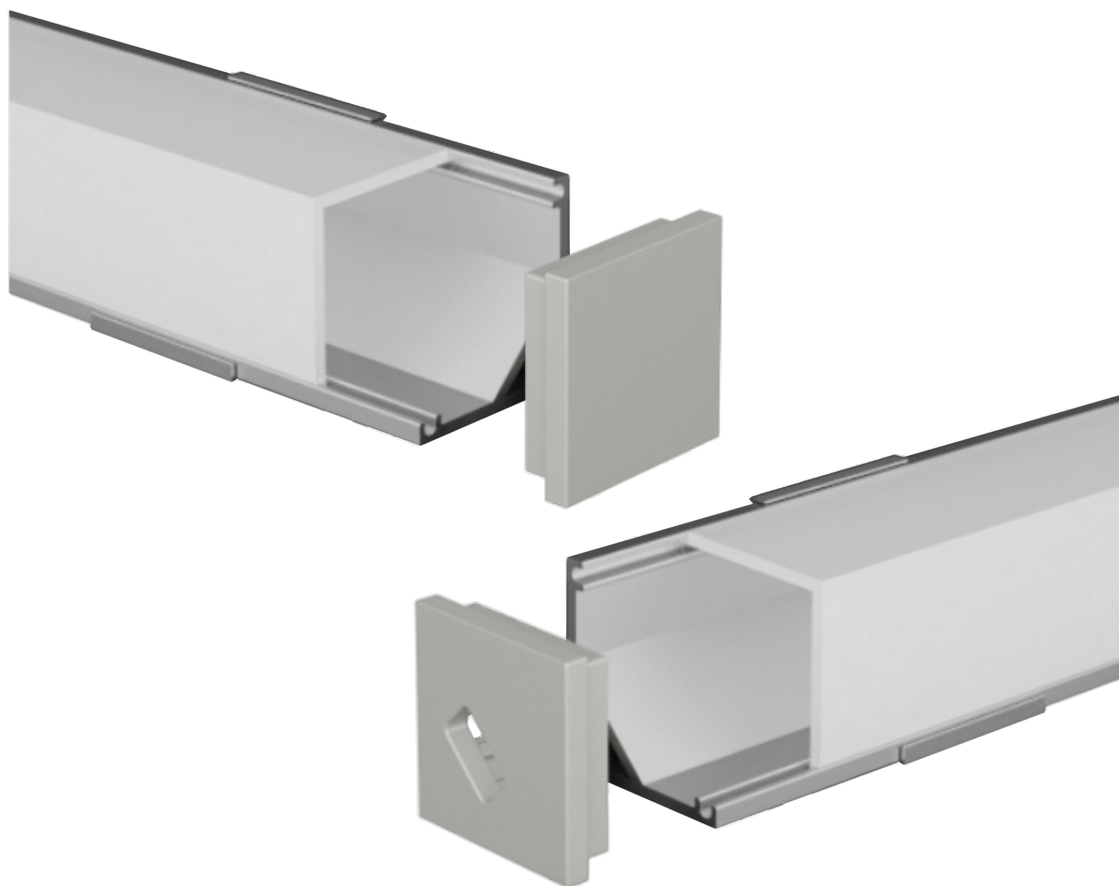
white



black







The profiles are supplied cut to size, maximum length 3m, ready for installation, with standard on-off or dimmable power supplies for white light.

The RGB+W strips can be supplied with control via RF remote control, wall touch panel, dmx, dali, and with the Google Assistance, Alexa and Tuya apps for smartphone control.

## accessories

opal  
cover  
CV-A14/02-OP



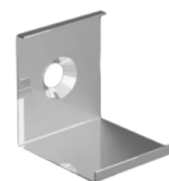
cap  
with hole  
TP-A14/02-T1

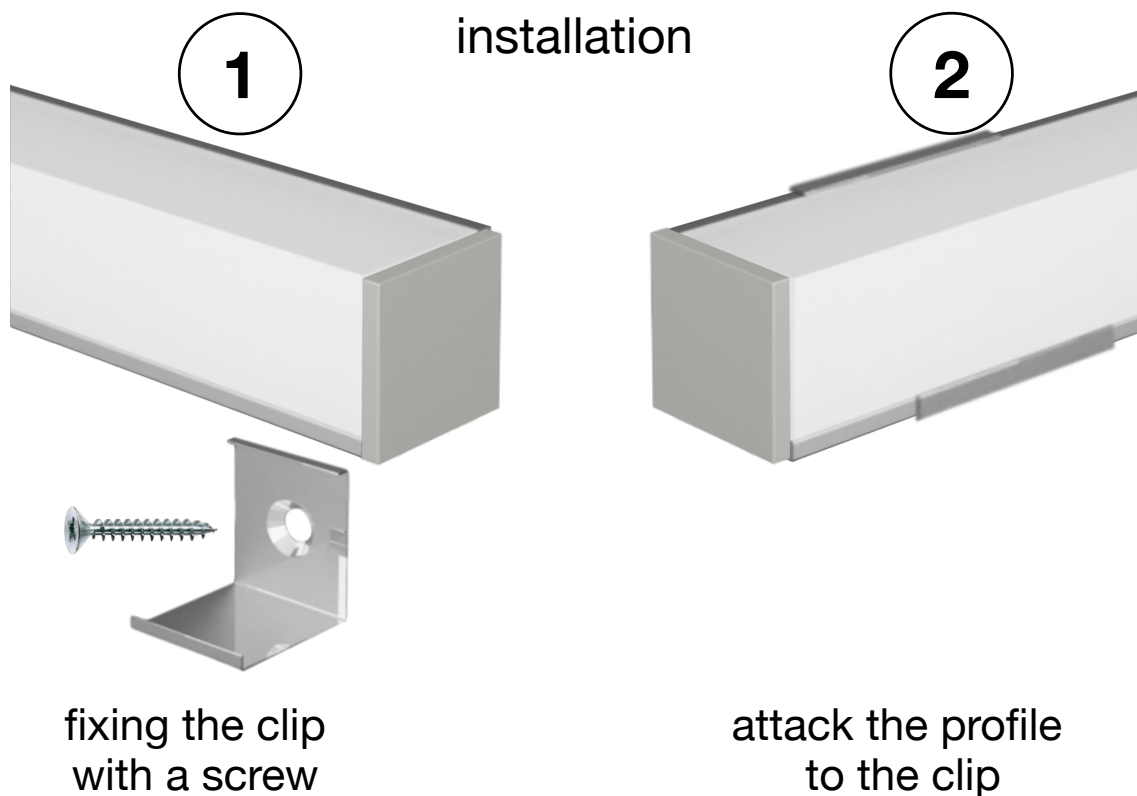


closed  
cap  
TP-A14/02-T2



clip  
CL-A14/02

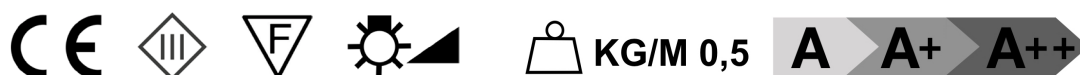
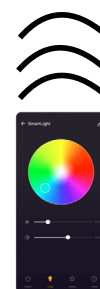
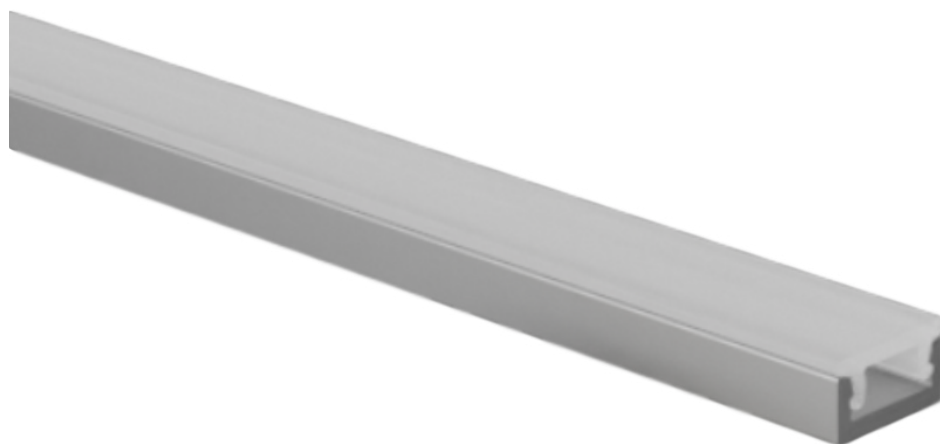




The profiles are supplied cut to measure, maximum length 3m, complete with diffuser + caps and fixing clips.

Upon request, the profiles are supplied with LED strips chosen from White / Dynamic White / RGB / RGB+W and light control modules managed by the following systems:

TYPE LED	RF REMOTE CONTROL / PANEL	DMX	DALI	ALEXA/GOOGLE HOME/TUYA	PUSH	1-10V 0-10V
WHITE LED	✓	✓	✓	✓	✓	✓
DYNAMIC WHITE LED	✓	✓	✓	✓		
RGB LED	✓	✓	✓	✓		
RGB+W LED	✓	✓	✓	✓		

**RECTANGULAR FLAT PROFILE "MICRO"**  
**MODEL "PRE-R09/01"**


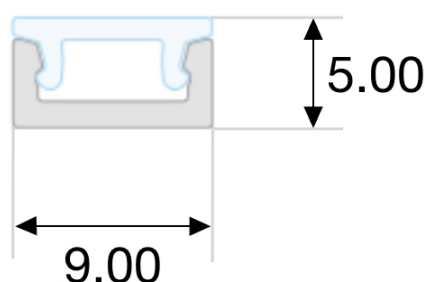
Profile in silver-grey anodized and white painted aluminum, cut to measure on your needs.

Excellent profile for visible installations, or for lighting environments with housing in perimeter veils, it stands out for its height of only 5mm.

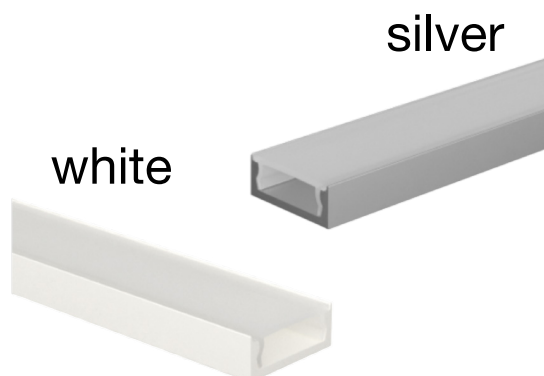
The slim design of the profile makes it particularly suitable for under-cabinet installations in your kitchens, but it integrates perfectly into any type of furniture. Cover in opal polycarbonate.

Supplied complete for installation with white light LED strips and with the appropriate power supplies according to the power and type of LEDs inserted.

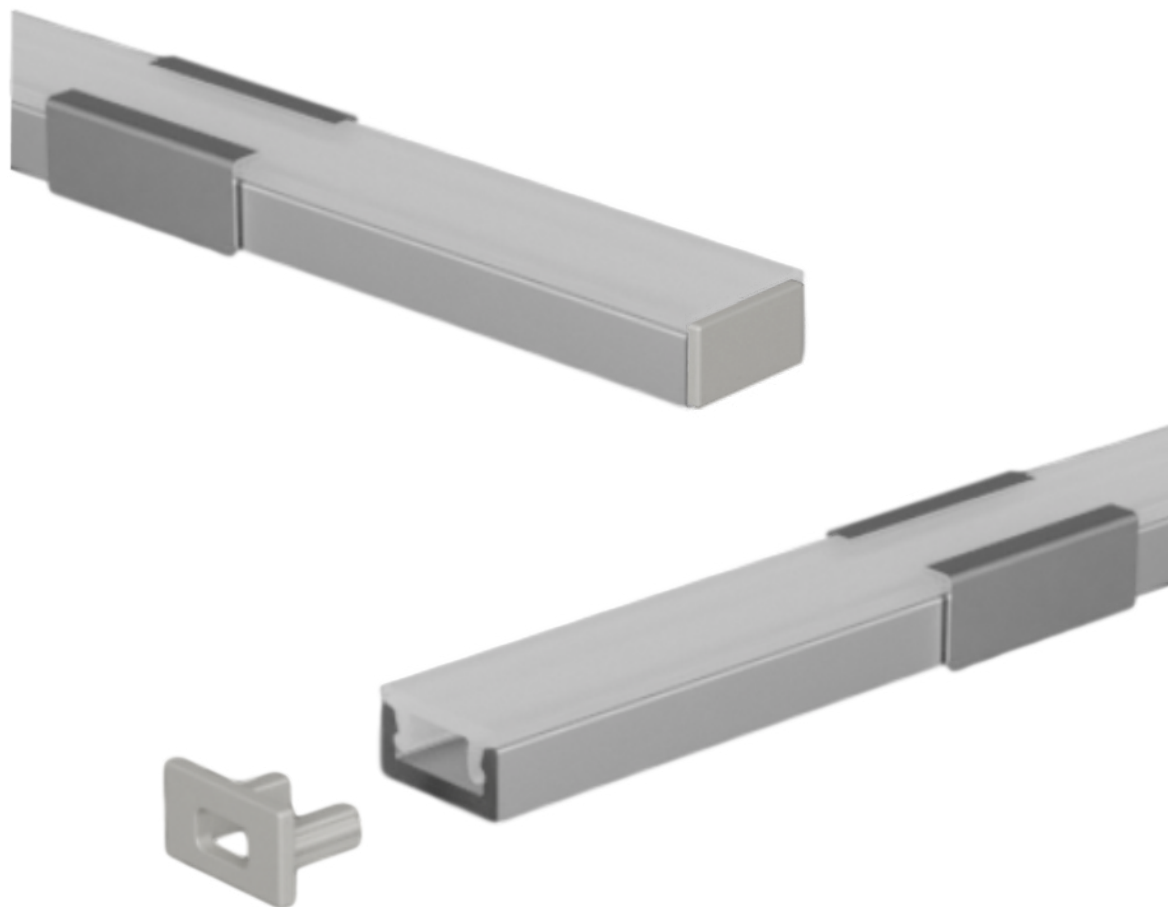
### dimensions



### finishes available





**RECTANGULAR FLAT PROFILE "MICRO"  
 MODEL "PRE-R09/01"**


The profiles are supplied cut to size, maximum length 3m, ready for installation, with standard on-off or dimmable power supplies for white light.

The profiles can be supplied with control via RF remote control, wall touch panel, dmx, dali, with the Google Assistance, Alexa and Tuya apps for smartphone control.

### accessories

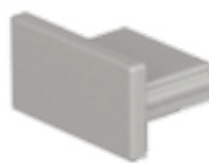
opal  
cove  
CV-R09/01-OP



cap  
with hole  
TP-R09/01-T1



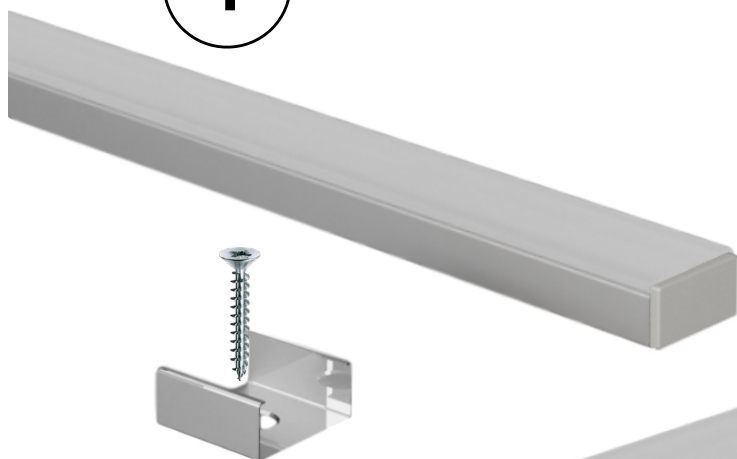
closed  
cap  
TP-R09/01-T2



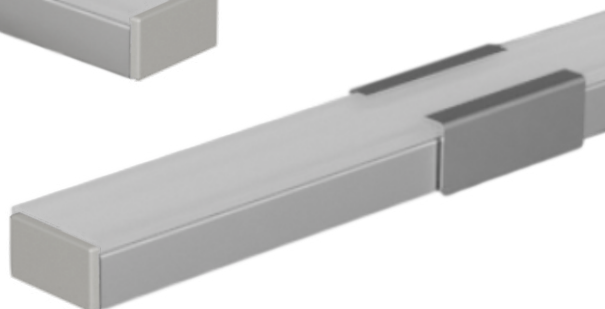
clip  
CL-R09/01



## installation

**1**


fixing the clip  
with a screw

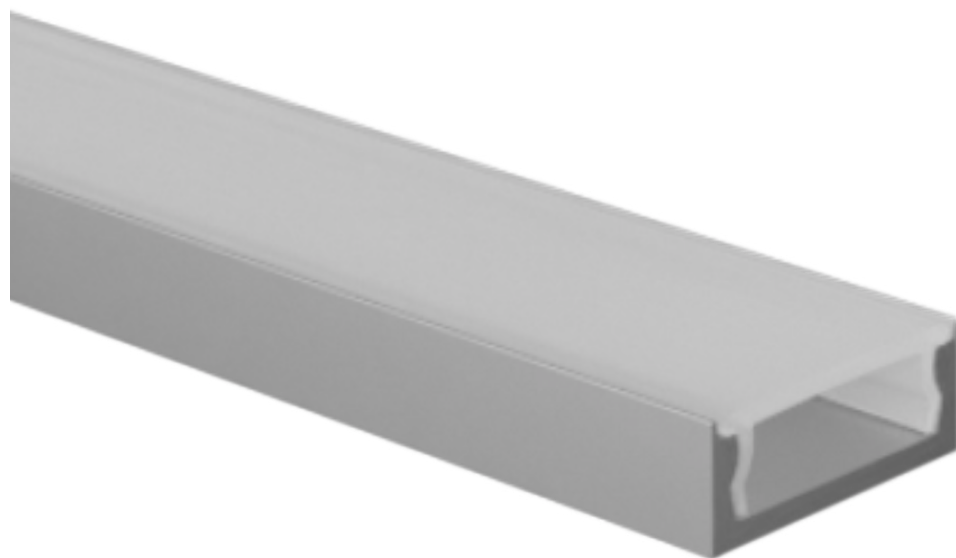
**2**


attack the profile  
to the clip

The profiles are supplied cut to size, maximum length 3m, complete with diffuser + caps and fixing clips.

Upon request, the profiles are supplied with white light LED strips and light control modules managed by the following systems:

TYPE LED	RF REMOTE CONTROL / PANEL	DMX	DALI	ALEXA/GOOGLE HOME/TUYA	PUSH	1-10V 0-10V
WHITE LED	✓	✓	✓	✓	✓	✓
DYNAMIC WHITE LED						
RGB LED						
RGB+W LED						

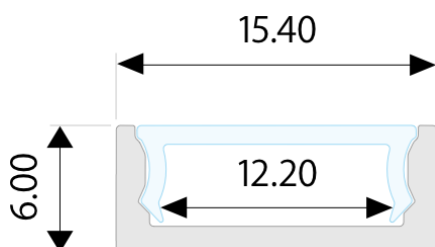
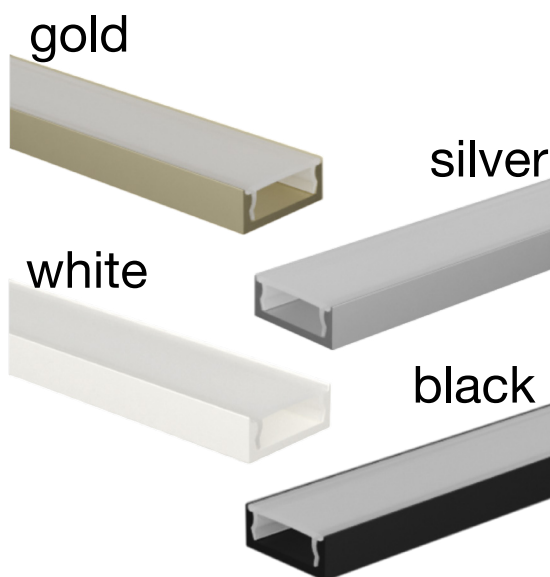
**RECTANGULAR FLAT PROFILE  
 MODEL "PRE-R15/01"**


Profile in silver-grey, black, gold and white painted anodized aluminum, cut to measure on your needs.

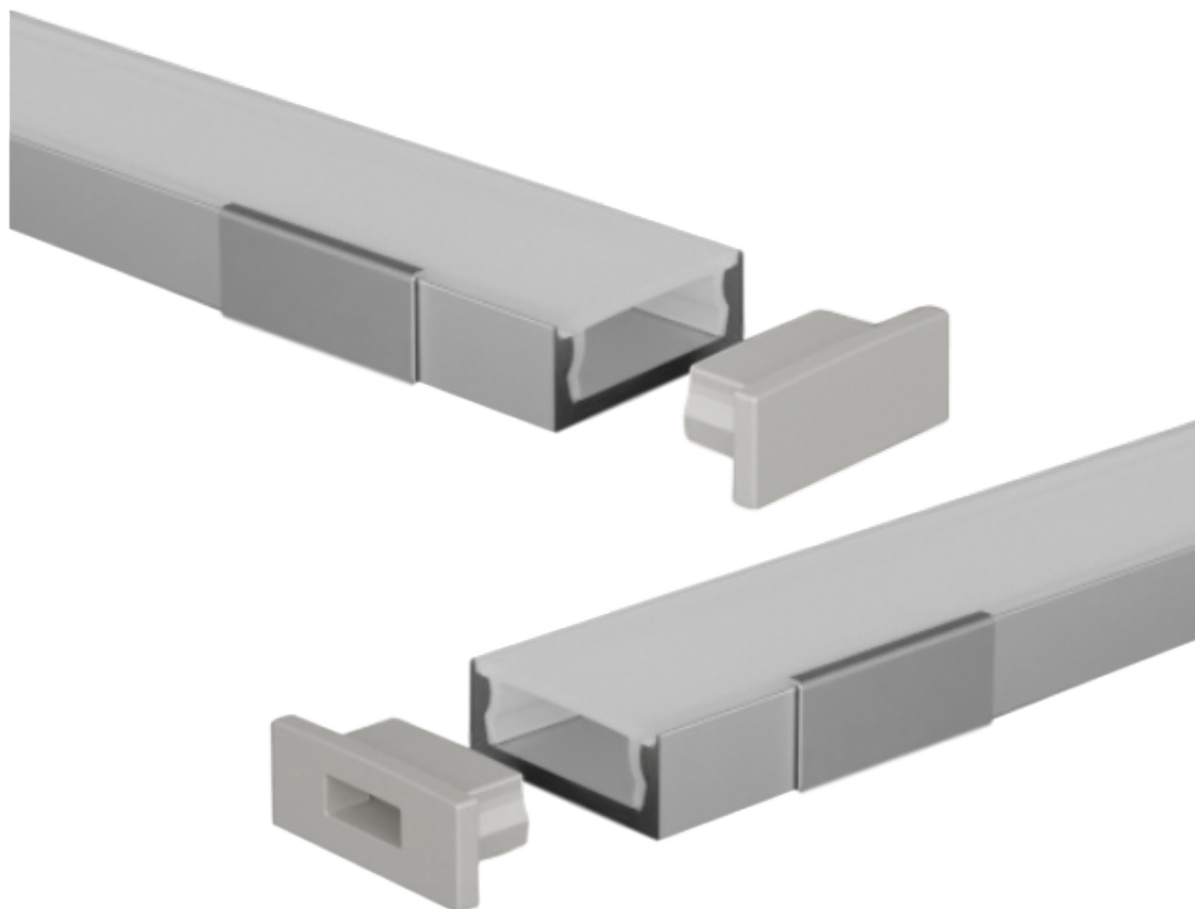
Excellent profile for visible installations, or for room lighting with housing in perimeter veils, it stands out for its height of only 6mm.

Cover in opal polycarbonate.

Supplied for installation complete with closing caps, opal cover and clip. With the profile we can also supply led strips with white light or RGB+W, with the appropriate power supplies depending on the power and type of led inserted.

**dimensions**

**finishes available**




**RECTANGULAR FLAT PROFILE  
 MODEL "PRE-R15/01"**


The profiles are supplied cut to size, maximum length 3m, ready for installation, with standard on-off or dimmable power supplies for white light.

The RGB+W strips can be supplied with control via RF remote control, wall touch panel, dmx, dali, and with the Google Assistance, Alexa and Tuya apps for smartphone control.

## accessories

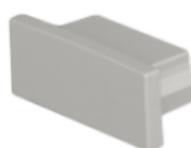
opal  
cover  
CV-R15/01-OP



cap  
with hole  
TP-R15/01-T1



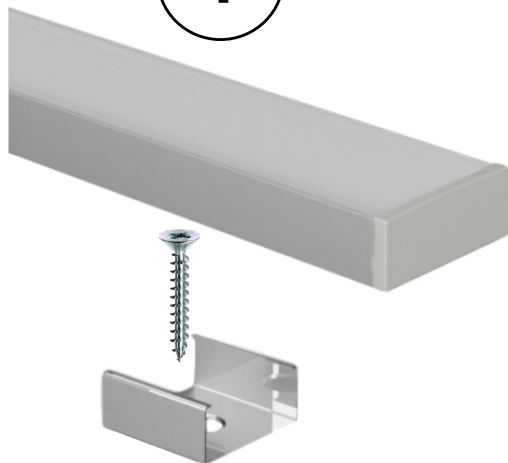
closed  
cap  
TP-R15/01-T2



clip  
CL-R15/01



## installation

**1**


fixing the clip  
with a screw

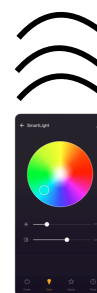
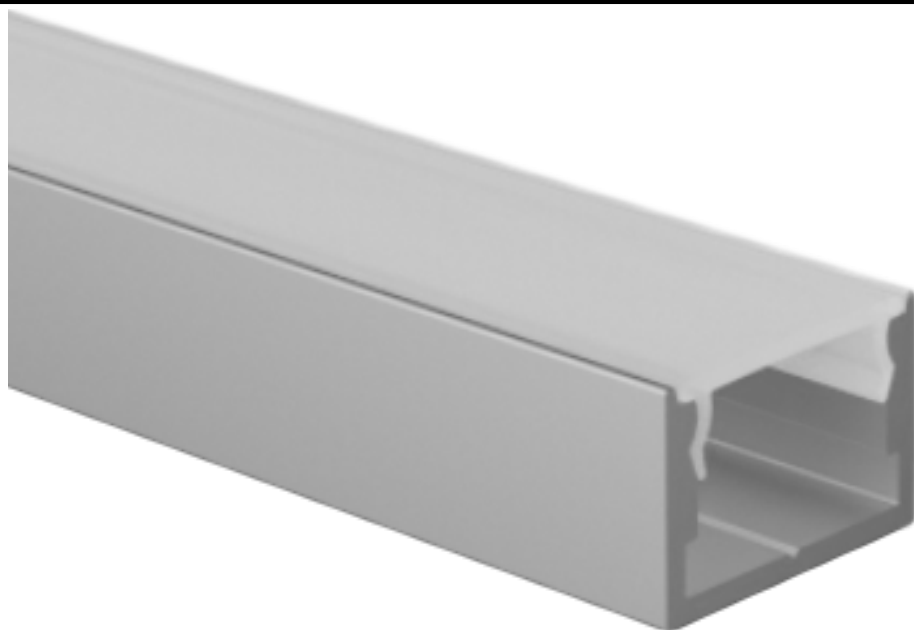
**2**


attach the profile  
to the clip

The profiles are supplied cut to measure, maximum length 3m, complete with diffuser + caps and fixing clips.

Upon request, the profiles are supplied with LED strips chosen from White / Dynamic White / RGB / RGB+W and light control modules managed by the following systems:

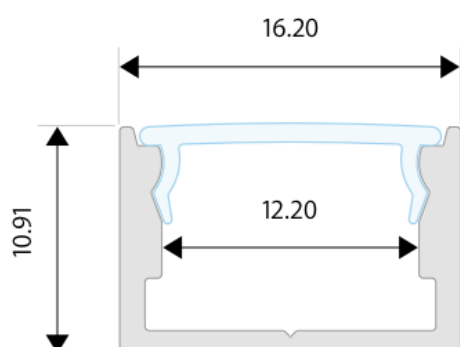
TYPE LED	RF REMOTE CONTROL / PANEL	DMX	DALI	ALEXA/GOOGLE HOME/TUYA	PUSH	1-10V 0-10V
WHITE LED	✓	✓	✓	✓	✓	✓
DYNAMIC WHITE LED	✓	✓	✓	✓		
RGB LED	✓	✓	✓	✓		
RGB+W LED	✓	✓	✓	✓		

**RECTANGULAR LINEAR PROFILE  
 MODEL "PRE-R16/01"**

**KG/M 0,5**
**A**
**A+**
**A++**

Profile in silver-grey, black, gold and white painted anodized aluminum, cut to measure on your needs.

Excellent profile for visible installations, or for room lighting with housing in perimeter veils. Cover in opal polycarbonate.

Supplied for installation complete with closing caps, opal cover and clip. With the profile we can also supply LED strips with white light or RGB+W, with the appropriate power supplies depending on the power and type of LEDs inserted.

**dimensions**

**finishes available**
**gold**

**silver**

**white**

**black**




**RECTANGULAR LINEAR PROFILE  
 MODEL "PRE-R16/01"**


The profiles are supplied cut to size, maximum length 3m, ready for installation, with standard on-off or dimmable power supplies for white light.

The RGB+W strips can be supplied with control via RF remote control, wall touch panel, dmx, dali, and with the Google Assistance, Alexa and Tuya apps for smartphone control.

## accessories

opal  
cover  
CV-R16/01-OP



cap  
with hole  
TP-R16/01-T1



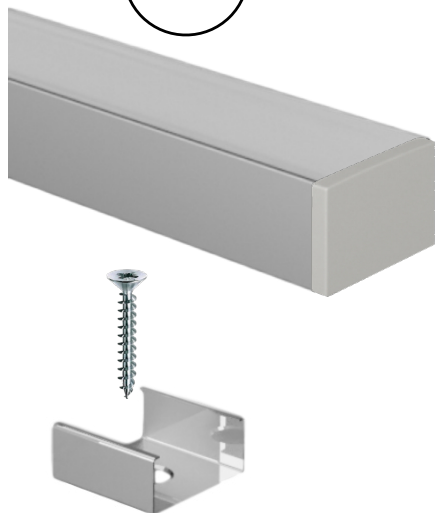
closed  
capo  
TP-R16/01-T2



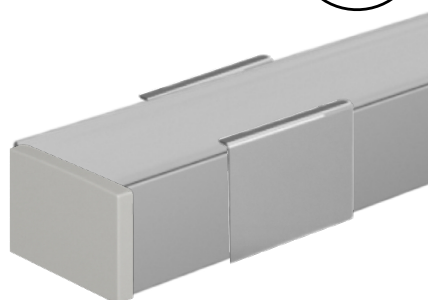
clip  
CL-R16/01



## installation

**1**


fixing the clip  
with a screw

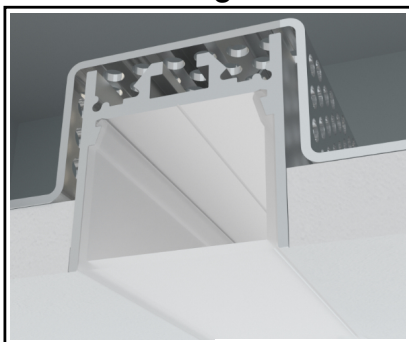
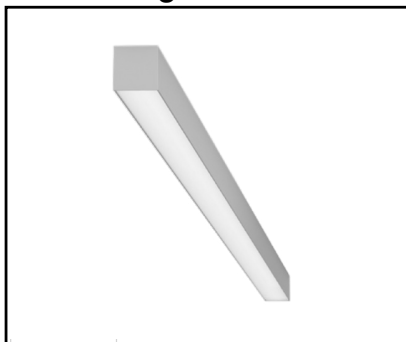
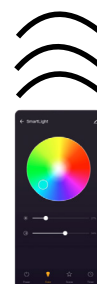
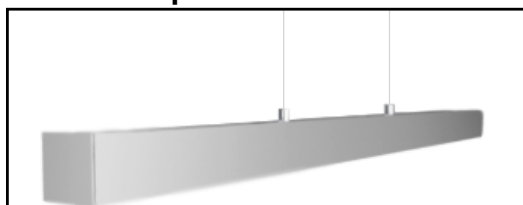
**2**


attack the profile  
to the clip

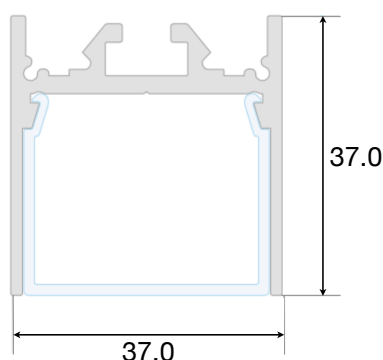
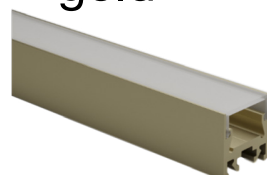
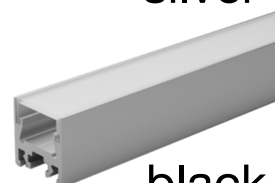
The profiles are supplied cut to measure, maximum length 3m, complete with diffuser + caps and fixing clips.

Upon request, the profiles are supplied with LED strips chosen from White / Dynamic White / RGB / RGB+W and light control modules managed by the following systems:

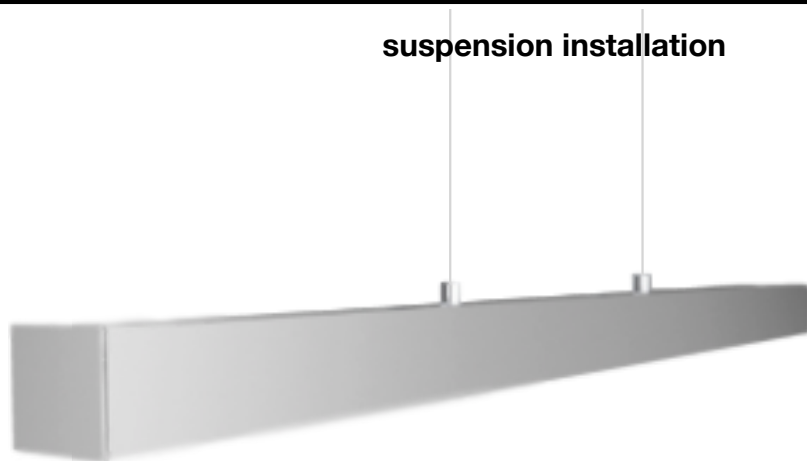
TYPE LED	RF REMOTE CONTROL / PANEL	DMX	DALI	ALEXA/GOOGLE HOME/TUYA	PUSH	1-10V 0-10V
WHITE LED	✓	✓	✓	✓	✓	✓
DYNAMIC WHITE LED	✓	✓	✓	✓		
RGB LED	✓	✓	✓	✓		
RGB+W LED	✓	✓	✓	✓		

**BIG PROFILE FOR TOTAL RECESSING "LARGE"  
 MODEL "PRE-RS37/01"**
**total recessing installation**

**ceiling installation**

**suspension installation**

**KG/M 0,5**


Profile in silver-grey, black, gold and white painted anodized aluminum, cut to size according to your needs. It is a recessed profile designed to be installed completely hidden inside plasterboard false ceilings or visible on the ceiling or Suspension. Compared to common flat LED profiles, this product has a wider coverage which guarantees a wider and more uniform diffusion of the light beam but given the width of the LED strip housing, it is possible to install two LED strips side by side; in addition, being a profile suitable for recessing in plasterboard, the final effect will be of great impact: a homogeneous and continuous beam of light. Cover in opal or transparent polycarbonate. Supplied for installation complete with closing caps, opal cover and plate. With the profile we can also supply LED strips with white light or RGB+W, with the appropriate power supplies depending on the power and type of LEDs inserted.

**dimensions**

**finishes available**
**gold**

**silver**

**white**

**black**


**BIG PROFILE FOR TOTAL RECESSING "LARGE"  
 MODEL "PRE-RS37/01"**
**suspension installation**

**ceiling installation**

**total recessing installation**

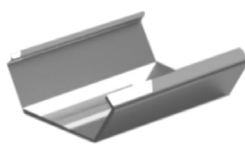
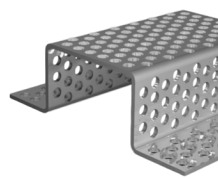

The profiles are supplied cut to size, maximum length 3m, ready for installation, with standard on-off or dimmable power supplies for white light.

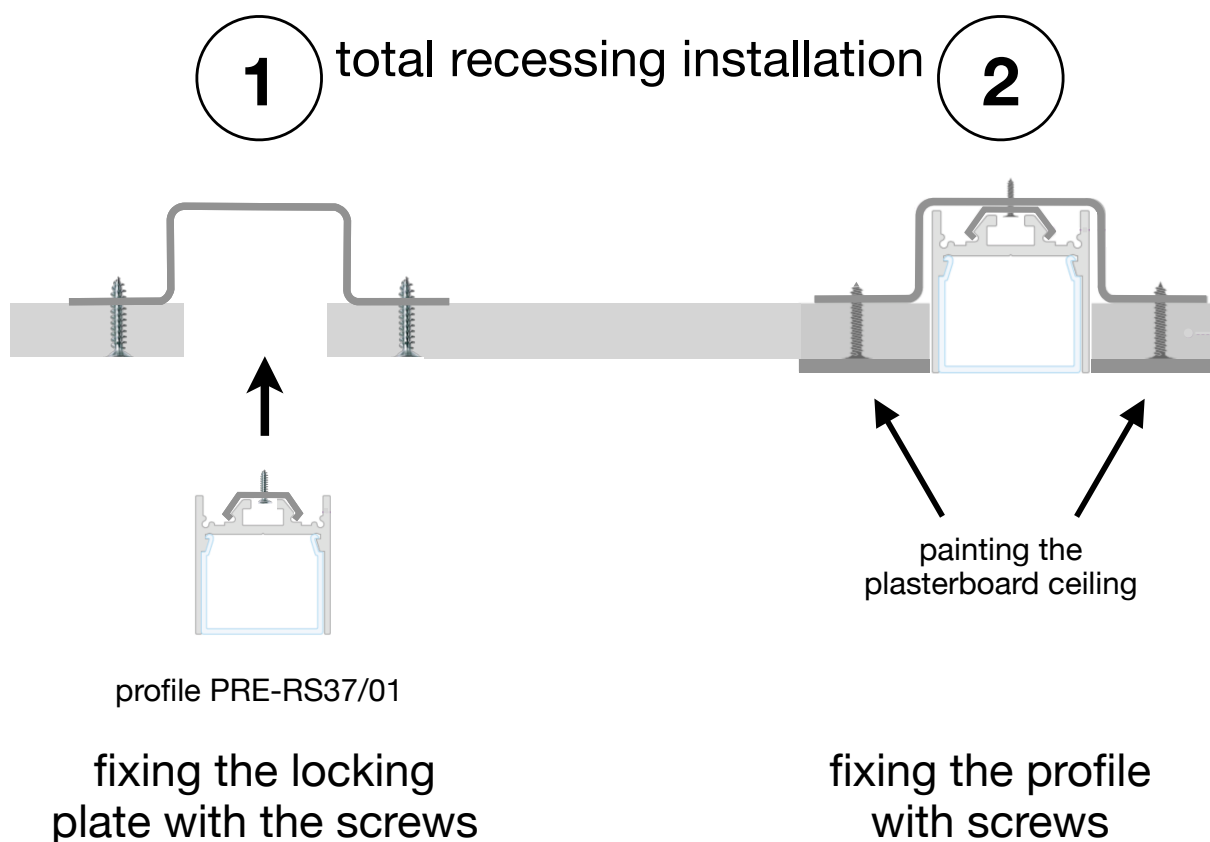
The RGB+W strips can be supplied with control via RF remote control, wall touch panel, dmx, dali, and with the Google Assistance, Alexa and Tuya apps for smartphone control.

**accessories**

 opal  
cover  
CV-RS37/01-OP

 closed  
cap  
TP-RS37/01-T1

 clip  
CL-RS37/01

 fixing  
plate  
CL-RS37/02

 hanging  
kit  
CL-RS37/03


**BIG PROFILE FOR TOTAL RECESSING "LARGE"  
 MODEL "PRE-RS37/01"**


The profiles are supplied cut to measure, maximum length 3m, complete with diffuser + caps and fixing clips.

Upon request, the profiles are supplied with LED strips chosen from White / Dynamic White / RGB / RGB+W and light control modules managed by the following systems:

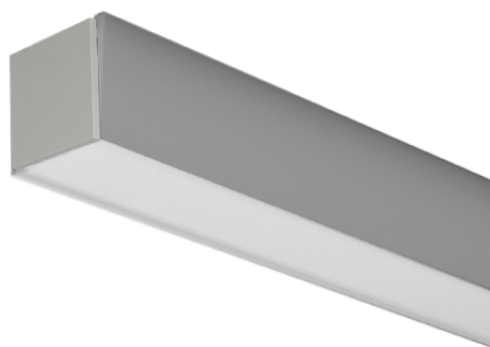
TYPE LED	RF REMOTE CONTROL / PANEL	DMX	DALI	ALEXA/GOOGLE HOME/TUYA	PUSH	1-10V 0-10V
WHITE LED	✓	✓	✓	✓	✓	✓
DYNAMIC WHITE LED	✓	✓	✓	✓		
RGB LED	✓	✓	✓	✓		
RGB+W LED	✓	✓	✓	✓		



**1**

ceiling installation

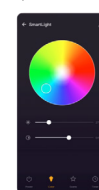
**2**

 fixing the clip  
with a screw

 attack the profile  
to the clip

The profiles are supplied cut to measure, maximum length 3m, complete with diffuser + caps and fixing clips.

Upon request, the profiles are supplied with LED strips chosen from White / Dynamic White / RGB / RGB+W and light control modules managed by the following systems:

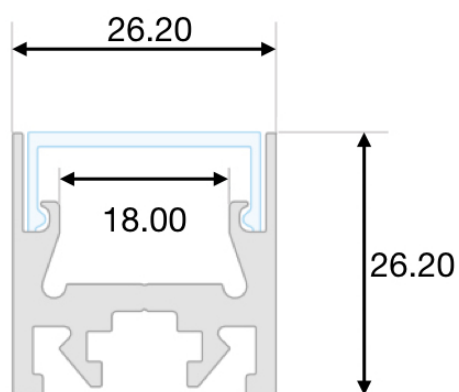
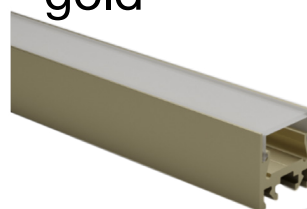
TYPE LED	RF REMOTE CONTROL / PANEL	DMX	DALI	ALEXA/GOOGLE HOME/TUYA	PUSH	1-10V 0-10V
WHITE LED	✓	✓	✓	✓	✓	✓
DYNAMIC WHITE LED	✓	✓	✓	✓		
RGB LED	✓	✓	✓	✓		
RGB+W LED	✓	✓	✓	✓		

**RECTANGULAR CEILING PROFILE  
 MODEL "PRE-R26/01"**

**KG/M 0,5**
**A**
**A+**
**A++**

Profile in silver-grey, black, gold and white painted anodized aluminum, cut to measure on your needs.

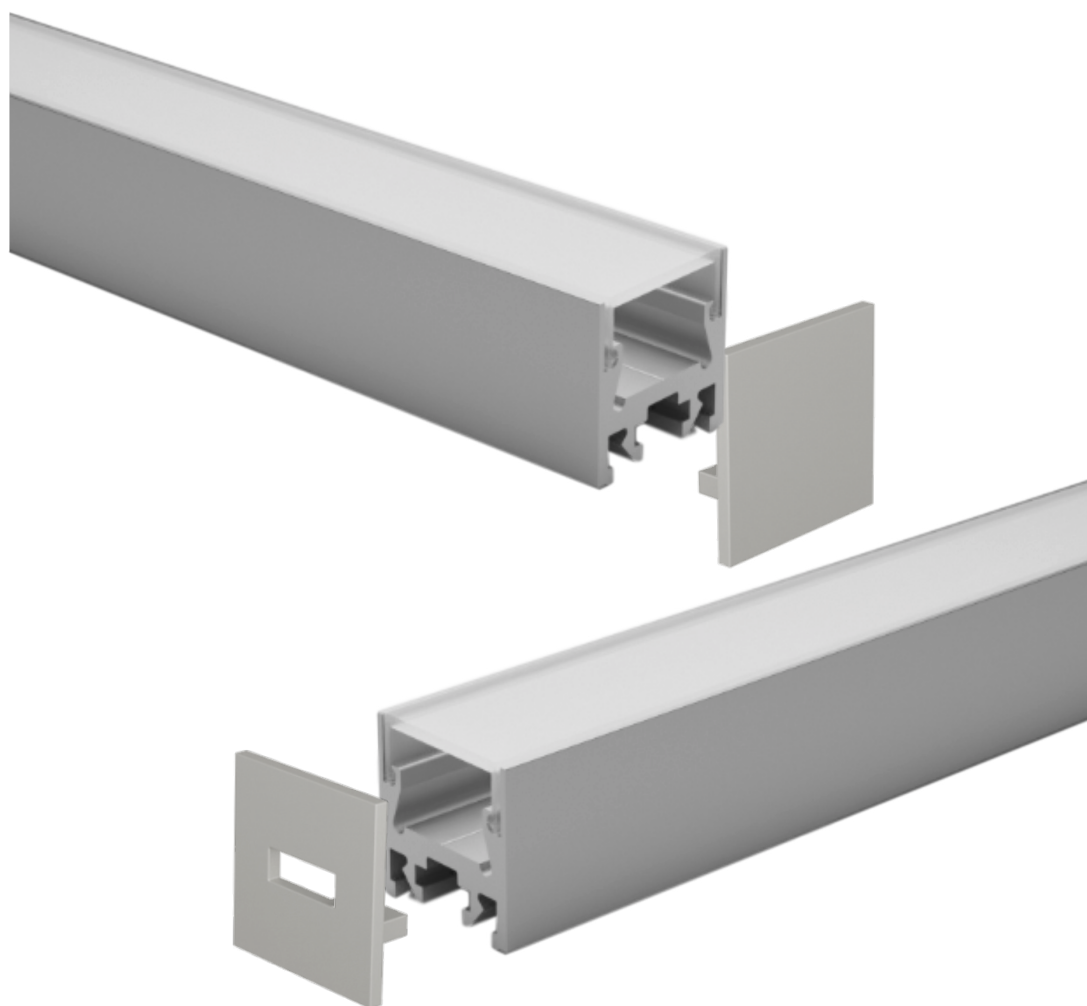
Excellent profile for visible installations, or for room lighting with housing in perimeter veils. Cover in opal polycarbonate.

Supplied for installation complete with closing caps, opal cover and clip. With the profile we can also supply LED strips with white light or RGB+W, with the appropriate power supplies depending on the power and type of LEDs inserted.

**dimensions**

**finishes available**
**gold**

**silver**

**white**

**black**


**RECTANGULAR CEILING PROFILE  
 MODEL "PRE-R26/01"**


The profiles are supplied cut to size, maximum length 3m, ready for installation, with standard on-off or dimmable power supplies for white light.

The RGB+W strips can be supplied with control via RF remote control, wall touch panel, dmx, dali, and with the Google Assistance, Alexa and Tuya apps for smartphone control.

## accessories

opal  
cover  
CV-R26/01-OP



cap  
with hole  
CV-R26/01-TR



closed  
cap  
TP-R26/01-T2



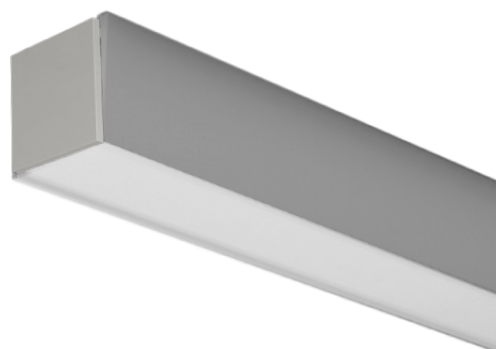
clip  
CL-RS26/01



**RECTANGULAR CEILING PROFILE  
 MODEL "PRE-R26/01"**
**installation**
**1**

 fixing the clip  
 with a screw

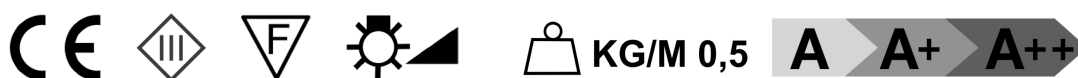
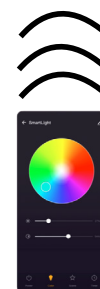
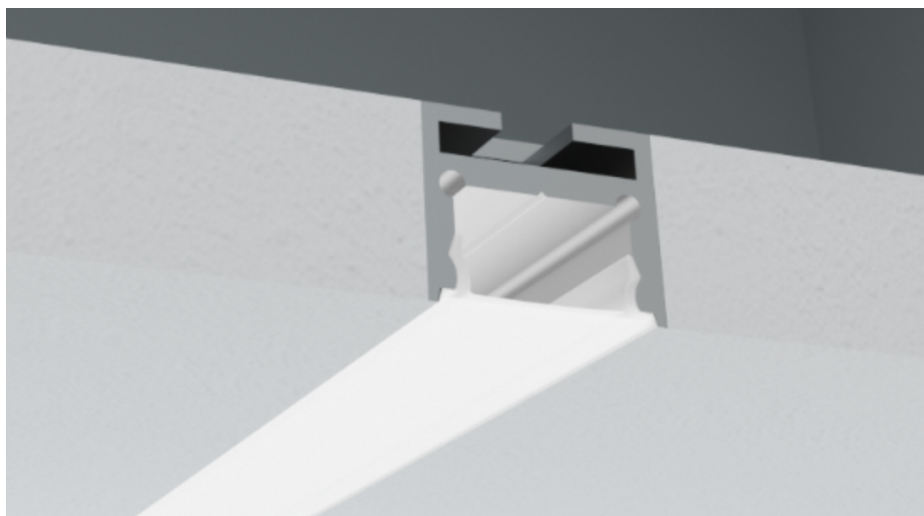
**2**

 attack the profile  
 to the clip


The profiles are supplied cut to measure, maximum length 3m, complete with diffuser + caps and fixing clips.

Upon request, the profiles are supplied with LED strips chosen from White / Dynamic White / RGB / RGB+W and light control modules managed by the following systems:

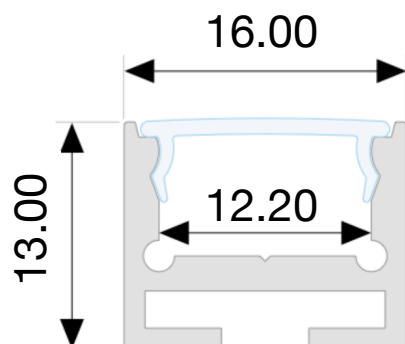
TYPE LED	RF REMOTE CONTROL / PANEL	DMX	DALI	ALEXA/GOOGLE HOME/TUYA	PUSH	1-10V 0-10V
WHITE LED	✓	✓	✓	✓	✓	✓
DYNAMIC WHITE LED	✓	✓	✓	✓		
RGB LED	✓	✓	✓	✓		
RGB+W LED	✓	✓	✓	✓		

**PROFILE FOR TOTAL RECESSING  
 MODEL "PRE-RS16/01"**


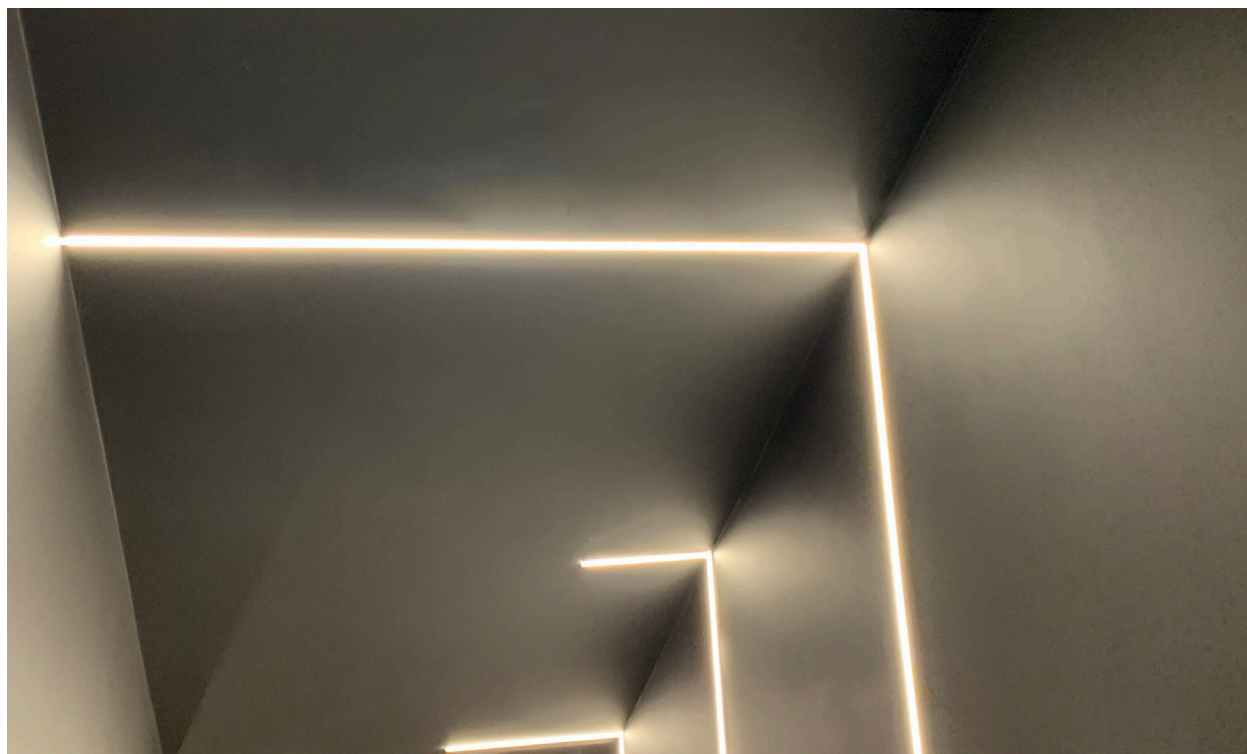
Silver-grey anodized aluminum profile cut to measure on your needs for customers who do not want visible support fins.

It was possible to remove the fins thanks to a particular and innovative hooking system, which, using a spring clip and a plate, firmly fixes the profile to the plasterboard false ceiling and prevents the creation of unevenness between the profile and the slab in which it's located.

By installing this product, which has a height equal to the standard height of normal plasterboard slabs, a discreet effect will be obtained, with the profile perfectly integrated into the false ceiling without external elements. Cover in opal polycarbonate. Supplied for installation complete with closing caps, opal cover and plate with springs. With the profile we can also supply LED strips with white light or RGB+W, with the appropriate power supplies depending on the power and type of LEDs inserted.

**dimensions**

**finishes available**
**silver**




**PROFILE FOR TOTAL RECESSING  
 MODEL "PRE-RS16/01"**


The profiles are supplied cut to size, maximum length 3m, ready for installation, with standard on-off or dimmable power supplies for white light.

The RGB+W strips can be supplied with control via RF remote control, wall touch panel, dmx, dali, and with the Google Assistance, Alexa and Tuya apps for smartphone control.

## accessories

opal  
cover  
CV-RS16/01-OP



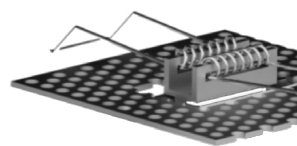
cap  
with hole  
TP-RS16/01-T1



closed  
cap  
TP-R16/01-T2



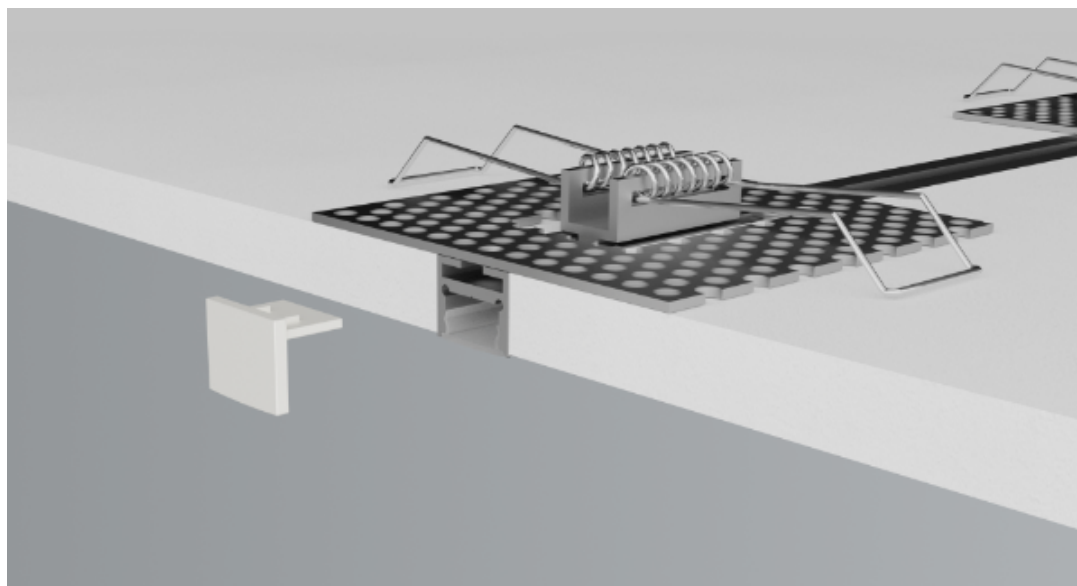
plate  
with springs  
CL-RS16/01



1

installation

2



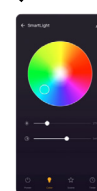
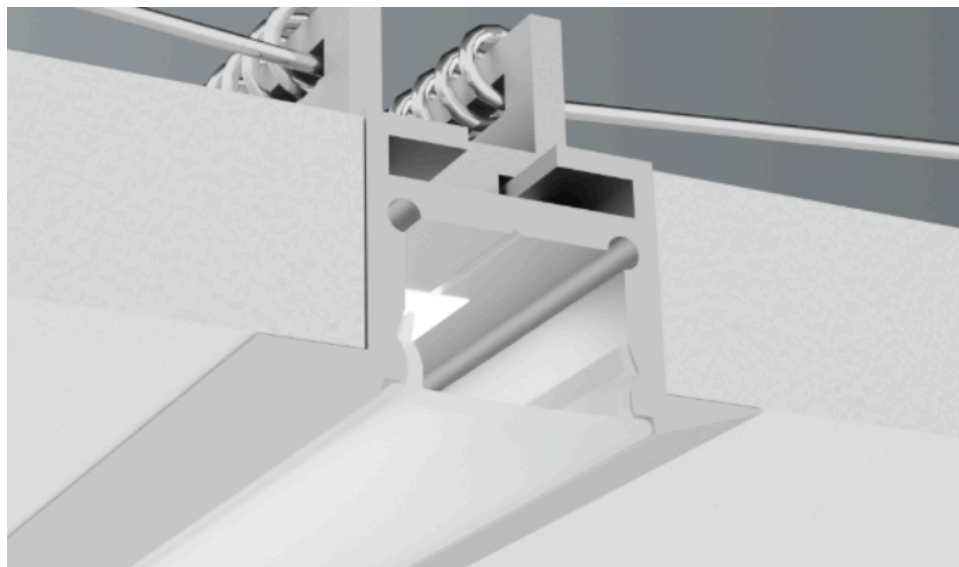
fixing the locking  
plate with screw

fixing the profile  
with the springs

The profiles are supplied cut to measure, maximum length 3m, complete with diffuser + caps and fixing clips.

Upon request, the profiles are supplied with LED strips chosen from White / Dynamic White / RGB / RGB+W and light control modules managed by the following systems:

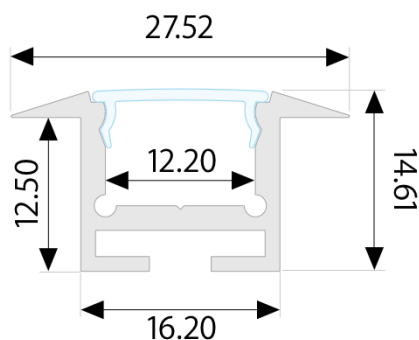
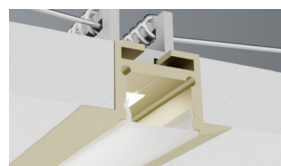
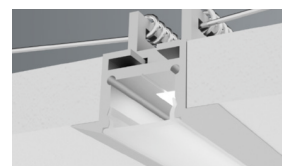
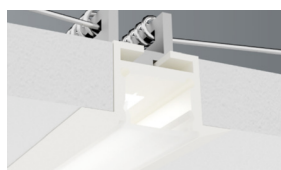
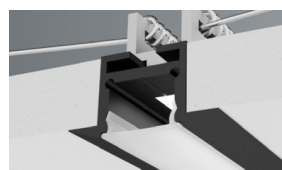
TYPE LED	RF REMOTE CONTROL / PANEL	DMX	DALI	ALEXA/GOOGLE HOME/TUYA	PUSH	1-10V 0-10V
WHITE LED	✓	✓	✓	✓	✓	✓
DYNAMIC WHITE LED	✓	✓	✓	✓		
RGB LED	✓	✓	✓	✓		
RGB+W LED	✓	✓	✓	✓		

**LINEAR PROFILE FOR RECESSING**  
**MODEL "PRE-R27/01"**

**KG/M 0,5**


Profile in silver-grey, black, gold and white painted anodized aluminum, cut to measure on your needs.

Excellent profile for recessed visible installations, quick installation inside plasterboard false ceilings, thanks to the thickness exactly equal to the thickness of a plasterboard plate and to its simple fixing system. The wings help to cover any imperfections in shaving, allowing you to obtain a perfect aesthetic result. Cover in opal polycarbonate.

Supplied for installation complete with closing caps, opal cover and clip. With the profile we can also supply LED strips with white light or RGB+W, with the appropriate power supplies depending on the power and type of LEDs inserted.

**dimensions**

**finishes available**
**gold**

**silver**

**white**

**black**


**LINEAR PROFILE FOR RECESSING  
 MODEL "PRE-R27/01"**


The profiles are supplied cut to size, maximum length 3m, ready for installation, with standard on-off or dimmable power supplies for white light.

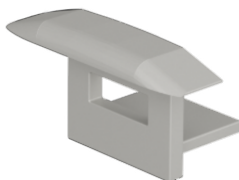
The RGB+W strips can be supplied with control via RF remote control, wall touch panel, dmx, dali, and with the Google Assistance, Alexa and Tuya apps for smartphone control.

## accessories

opal  
cover  
CV-RS27/01-OP



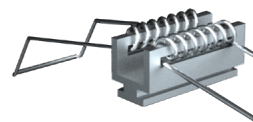
cap  
with hole  
TP-RS27/01-T1

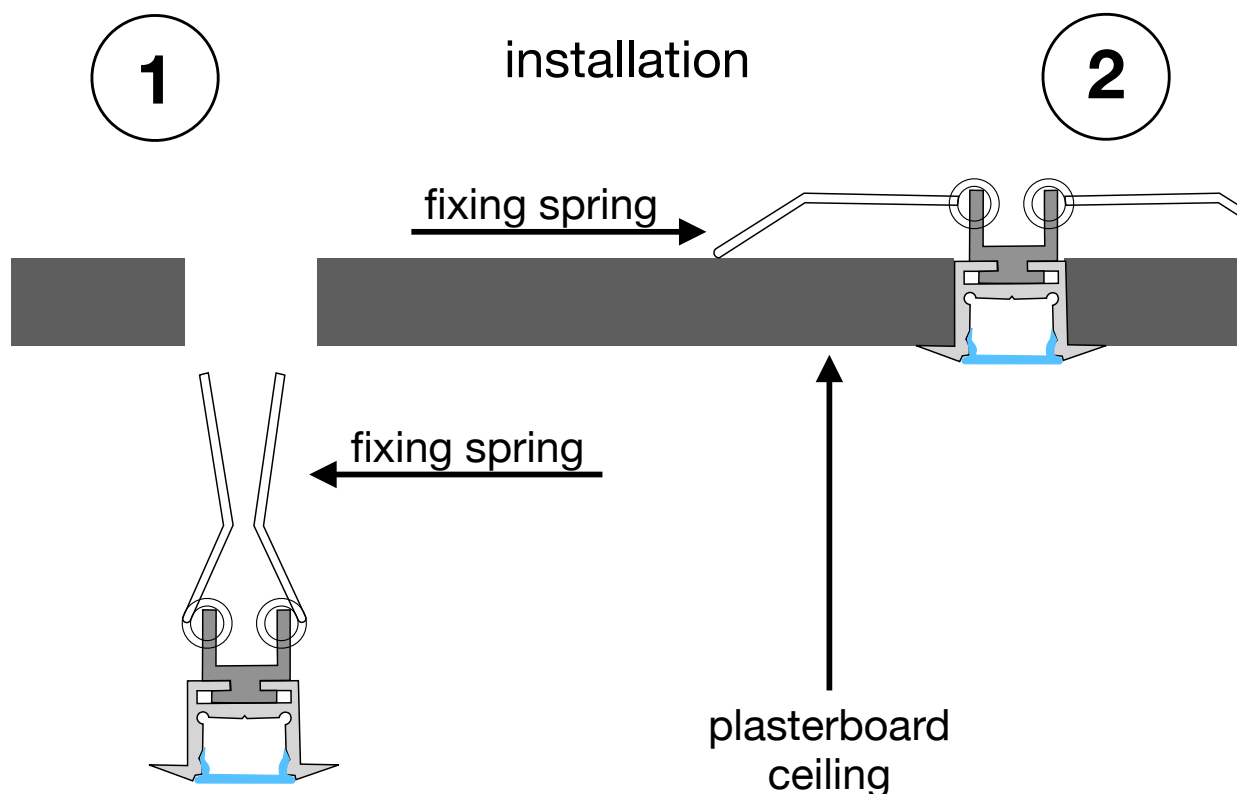


closed  
cap  
TP-RS27/01-T2



fixing  
spring  
CL-RS27/01



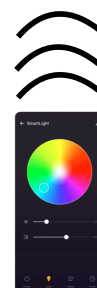
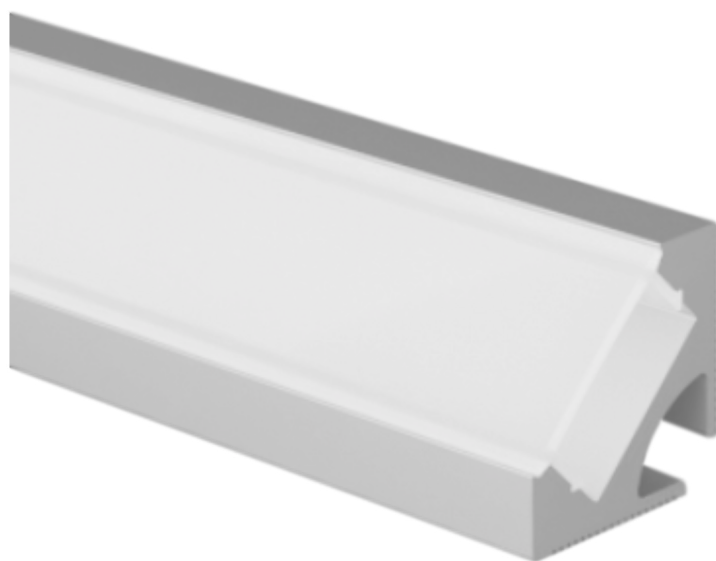
**LINEAR PROFILE FOR RECESSING  
 MODEL "PRE-R27/01"**


The profiles are supplied cut to measure, maximum length 3m, complete with diffuser + caps and fixing clips.

Upon request, the profiles are supplied with LED strips chosen from White / Dynamic White / RGB / RGB+W and light control modules managed by the following systems:

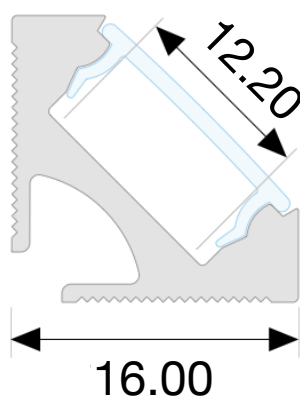
TYPE LED	RF REMOTE CONTROL / PANEL	DMX	DALI	ALEXA/GOOGLE HOME/TUYA	PUSH	1-10V 0-10V
WHITE LED	✓	✓	✓	✓	✓	✓
DYNAMIC WHITE LED	✓	✓	✓	✓		
RGB LED	✓	✓	✓	✓		
RGB+W LED	✓	✓	✓	✓		




**KG/M 0,5**
**A**
**A+**
**A++**

Profile in silver-grey, black, gold and white painted anodized aluminum, cut to measure on your needs. Excellent profile for visible installations, or for room lighting with the housing in perimeter veils, to direct the light towards the upwards or towards the interior of the room obtaining an excellent light reflection without any loss, thanks to the 45° inclination of the light. Cover in opal polycarbonate. Supplied for installation complete with closing caps, opal cover and clip. With the profile we can also supply LED strips with white light or RGB+W, with the appropriate power supplies depending on the power and type of LEDs inserted.

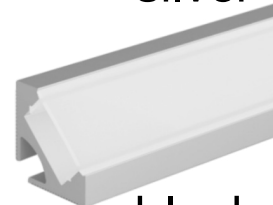
### dimensions

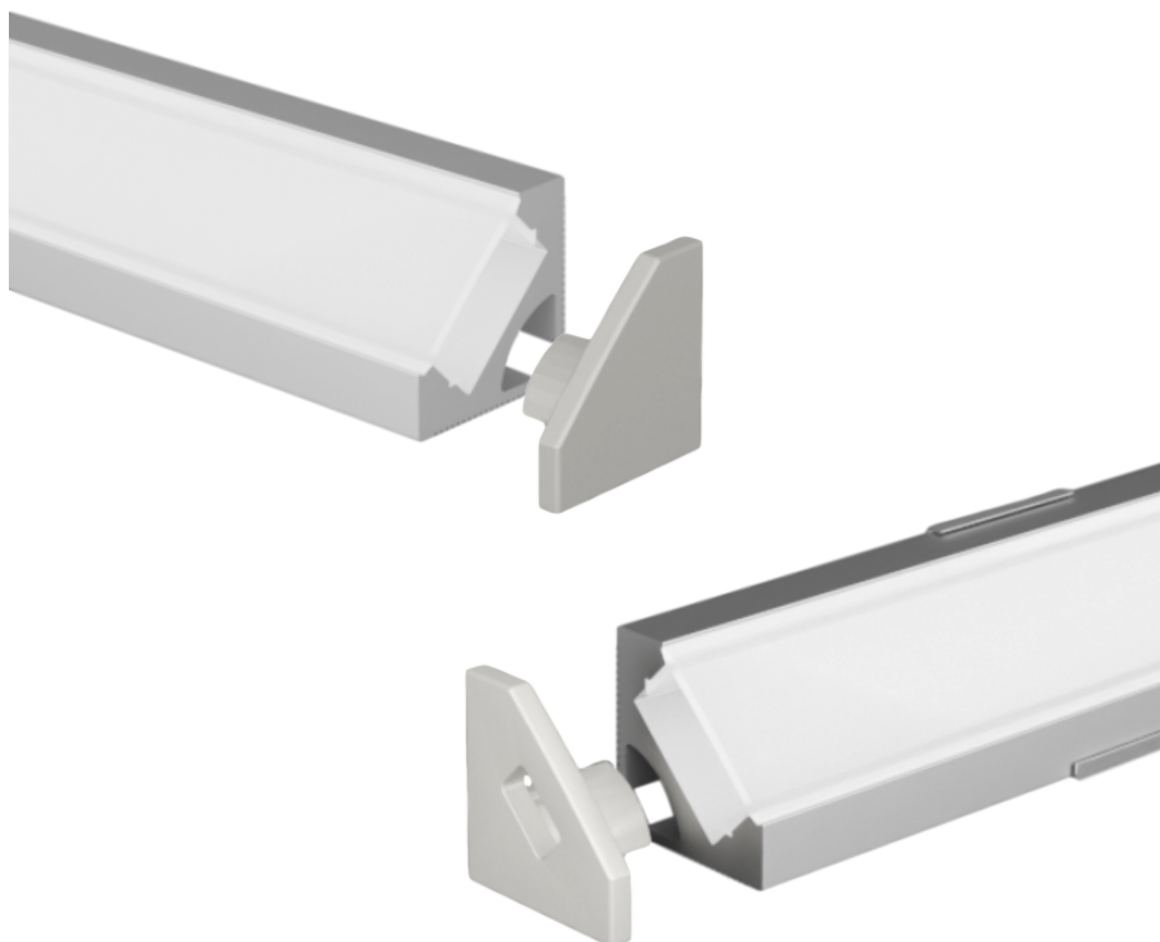


### finishes available

**gold**

**white**

**silver**

**black**


**ANGULAR FLAT PROFILE  
 MODEL "PRE-A12/01"**


The profiles are supplied cut to size, maximum length 3m, ready for installation, with standard on-off or dimmable power supplies for white light.

The RGB+W strips can be supplied with control via RF remote control, wall touch panel, dmx, dali, and with the Google Assistance, Alexa and Tuya apps for smartphone control.

## accessories

opal  
cover  
CV-A12/01-OP



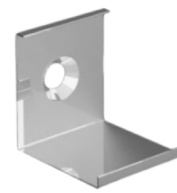
cap  
with hole  
TP-A12/01-T1



closed  
cap  
TP-A12/01-T2

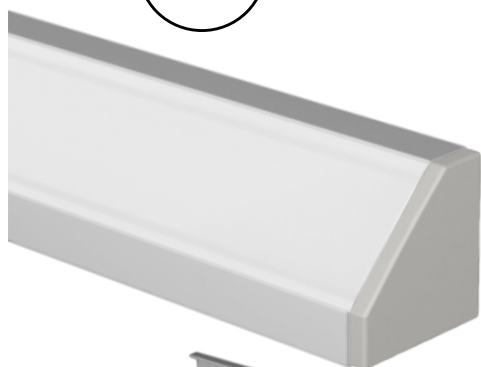
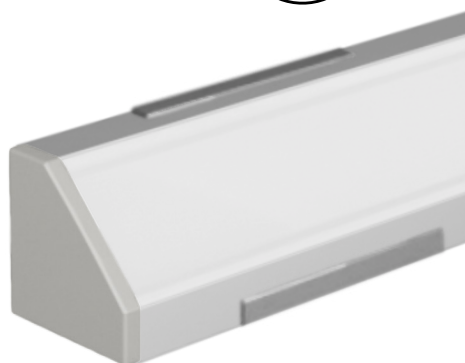


clip  
CL-A12/01



**1**

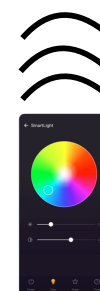
installation

**2**

 fixing the clip  
 with a screw

 attack the profile  
 to the clip

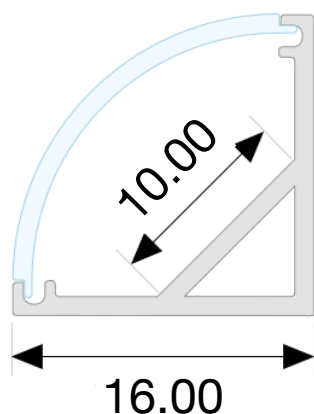
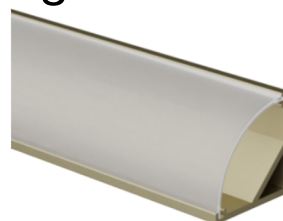
The profiles are supplied cut to measure, maximum length 3m, complete with diffuser + caps and fixing clips.

Upon request, the profiles are supplied with LED strips chosen from White / Dynamic White / RGB / RGB+W and light control modules managed by the following systems:

TYPE LED	RF REMOTE CONTROL / PANEL	DMX	DALI	ALEXA/GOOGLE HOME/TUYA	PUSH	1-10V 0-10V
WHITE LED	✓	✓	✓	✓	✓	✓
DYNAMIC WHITE LED	✓	✓	✓	✓		
RGB LED	✓	✓	✓	✓		
RGB+W LED	✓	✓	✓	✓		

**ANGULAR ROUND PROFILE  
 MODEL "PRE-A14/01"**

**KG/M 0,5**
**A**
**A+**
**A++**

Profile in silver-grey, black, gold and white painted anodized aluminum, cut to measure on your needs. Excellent profile for visible installations, or for lighting environments with housing in perimeter veils, to direct the light upwards or towards the interior of the room, obtaining excellent light reflection without any loss, thanks to the 45° inclination of the light. Cover in opal polycarbonate. Supplied for installation complete with closing caps, opal cover and clip. With the profile we can also supply LED strips with white light or RGB+W, with the appropriate power supplies depending on the power and type of LEDs inserted.

**dimensions**

**finishes available**
**gold**

**silver**

**white**

**black**


**ANGULAR ROUND PROFILE  
 MODEL "PRE-A14/01"**


The profiles are supplied cut to size, maximum length 3m, ready for installation, with standard on-off or dimmable power supplies for white light.

The RGB+W strips can be supplied with control via RF remote control, wall touch panel, dmx, dali, and with the Google Assistance, Alexa and Tuya apps for smartphone control.

## accessories

opal  
cover  
CV-A14/01-OP



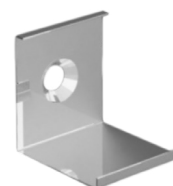
cap  
with hole  
TP-A14/01-T1

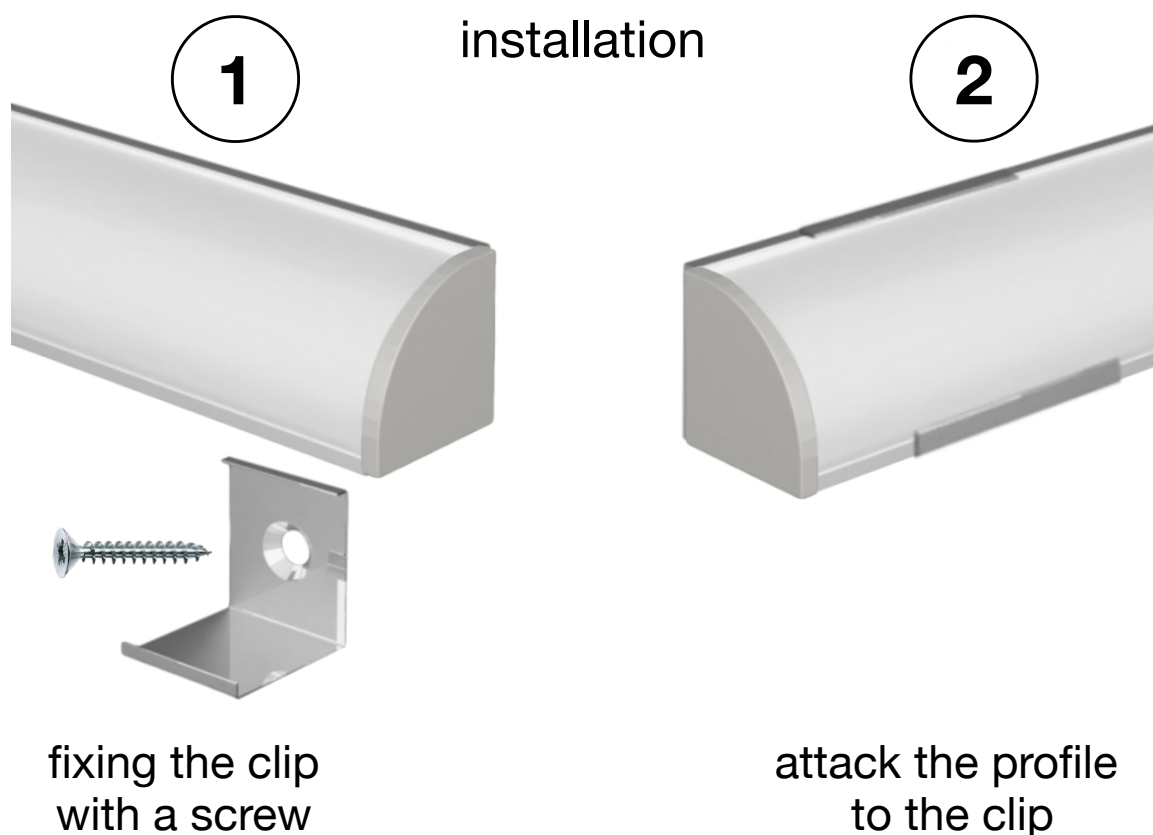


closed  
cap  
TP-A14/01-T2



clip  
CL-A14/01



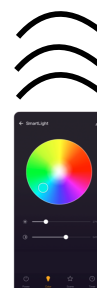
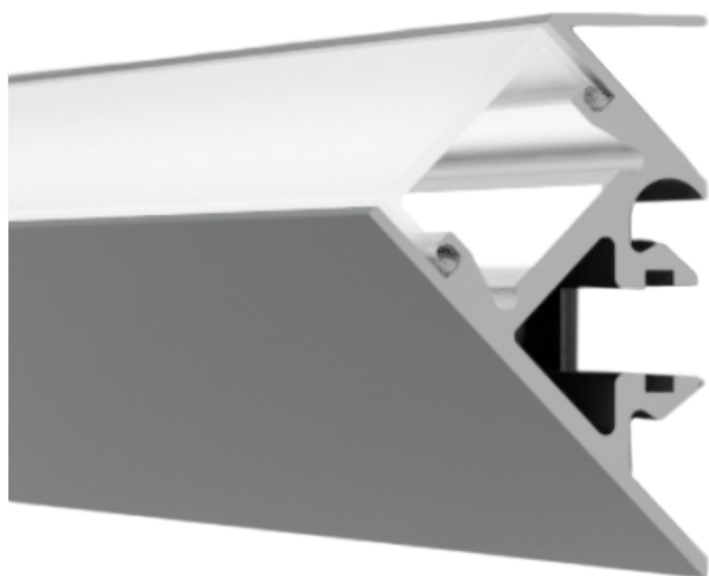


The profiles are supplied cut to measure, maximum length 3m, complete with diffuser + caps and fixing clips.

Upon request, the profiles are supplied with LED strips chosen from White / Dynamic White / RGB / RGB+W and light control modules managed by the following systems:

TYPE LED	RF REMOTE CONTROL / PANEL	DMX	DALI	ALEXA/GOOGLE HOME/TUYA	PUSH	1-10V 0-10V
WHITE LED	✓	✓	✓	✓	✓	✓
DYNAMIC WHITE LED	✓	✓	✓	✓		
RGB LED	✓	✓	✓	✓		
RGB+W LED	✓	✓	✓	✓		



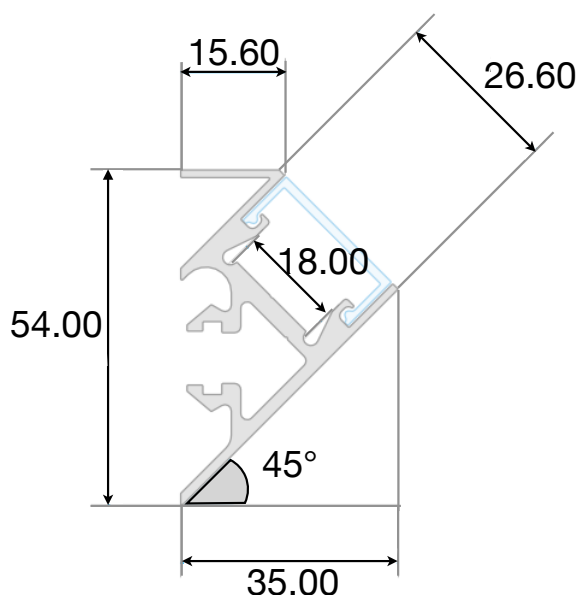


KG/M 0,5

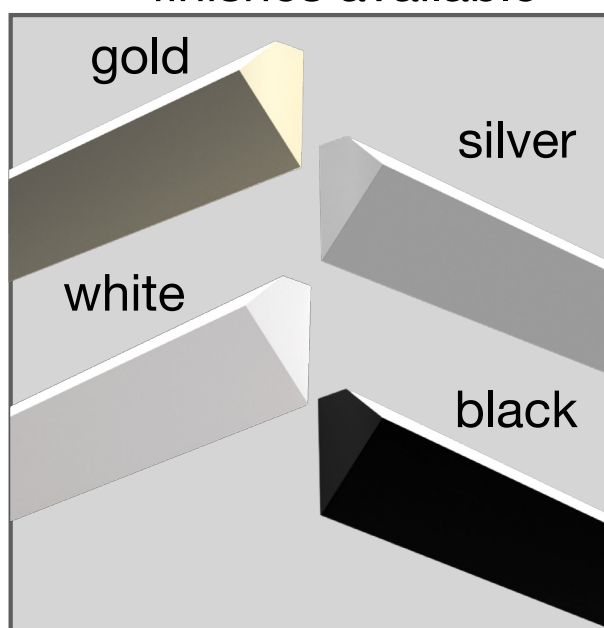
**A**
**A+**
**A++**

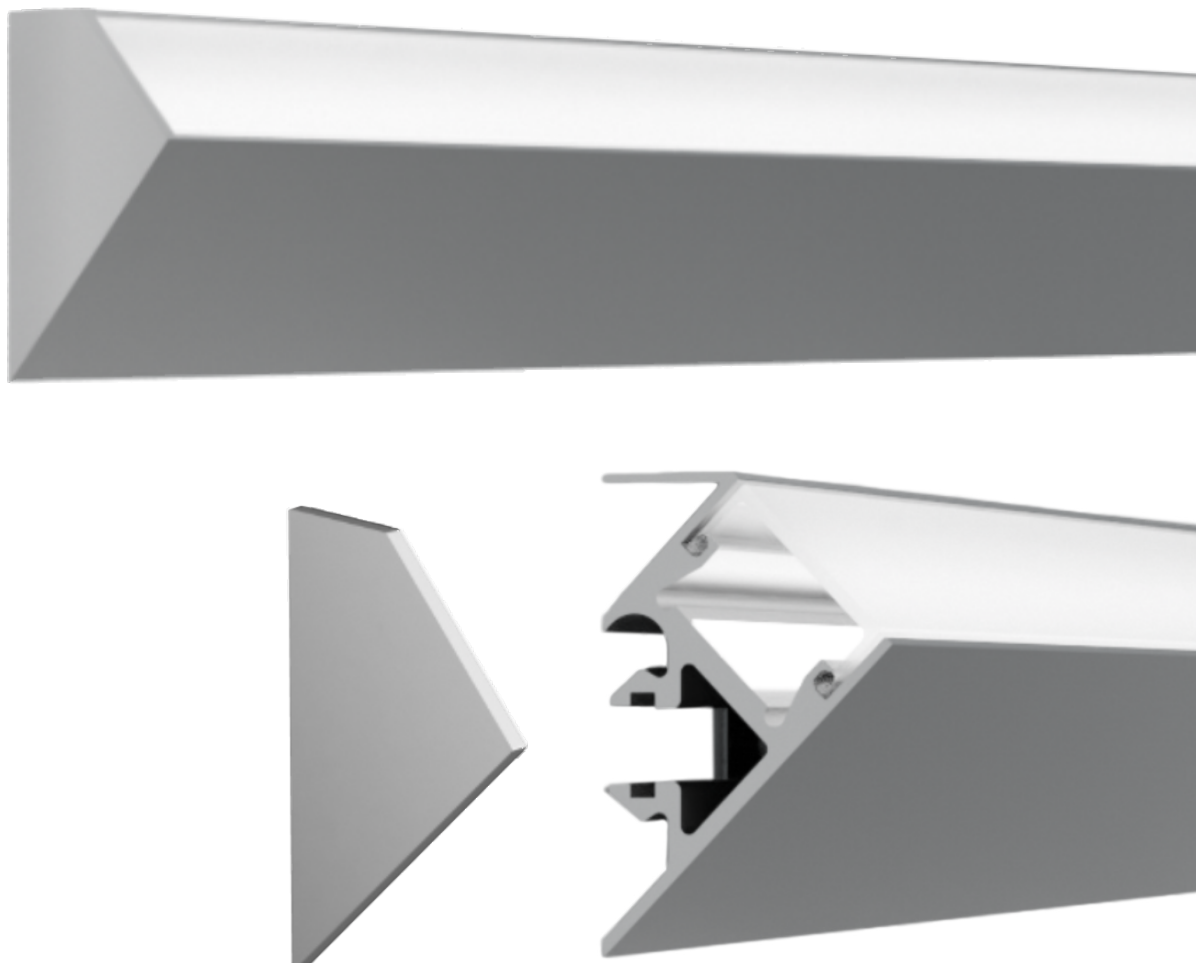
Profile in silver-grey, black, gold and white painted anodized aluminum, cut to measure on your needs. Excellent profile for visible installations, or for lighting environments with housing in perimeter veils, to direct the light upwards or towards the interior of the room, obtaining excellent light reflection without any loss, thanks to the 45° inclination of the light. Cover in opal polycarbonate. Supplied for installation complete with closing caps, opal cover and clip. With the profile we can also supply LED strips with white light or RGB+W, with the appropriate power supplies depending on the power and type of LEDs inserted.

### dimensions



### finishes available



**WALL CORNER PROFILE  
 MODEL "PRE-A26/01"**


The profiles are supplied cut to size, maximum length 3m, ready for installation, with standard on-off or dimmable power supplies for white light.

The RGB+W strips can be supplied with control via RF remote control, wall touch panel, dmx, dali, and with the Google Assistance, Alexa and Tuya apps for smartphone control.

## accessories

opal  
cover  
CV-A26/01-OP



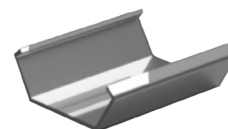
front side-closed  
cap  
TP-A26/01-T1



back side-closed  
cap  
TP-A26/01-T2



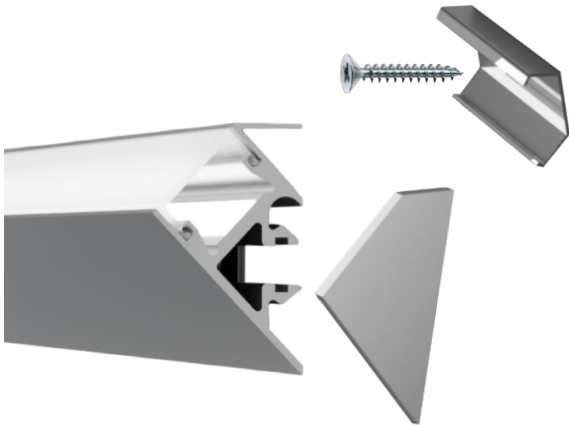
clip  
CL-A26/01



1

installation

2



fixing the clip  
with a screw

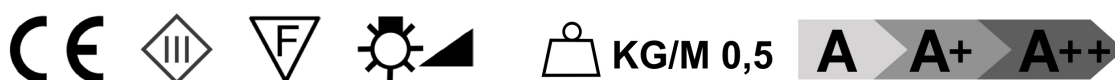
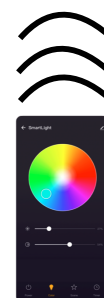


attack the profile  
to the clip

The profiles are supplied cut to measure, maximum length 3m, complete with diffuser + caps and fixing clips.

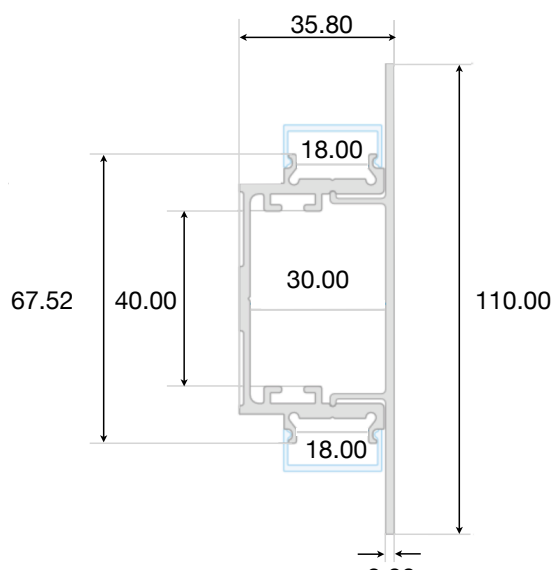
Upon request, the profiles are supplied with LED strips chosen from White / Dynamic White / RGB / RGB+W and light control modules managed by the following systems:

TYPE LED	RF REMOTE CONTROL / PANEL	DMX	DALI	ALEXA/GOOGLE HOME/TUYA	PUSH	1-10V 0-10V
WHITE LED	✓	✓	✓	✓	✓	✓
DYNAMIC WHITE LED	✓	✓	✓	✓		
RGB LED	✓	✓	✓	✓		
RGB+W LED	✓	✓	✓	✓		



Profile in silver-grey, black, gold and white painted anodized aluminum, cut to measure on your needs. Excellent profile for visible installations, or for ambient lighting with the housing in perimeter veils, to direct the light upwards or towards the interior of the room, obtaining excellent light reflection without any loss, thanks to the inclination at 45° of the light. Cover in opal polycarbonate. Supplied for installation complete with closure caps, opal cover and clip. With the profile we can also supply LED strips with white light or RGB+W, with the appropriate power supplies depending on the power and type of LEDs inserted.

### dimensions



### finishes available

gold



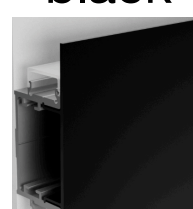
silver



white



black





The profiles are supplied cut to size, maximum length 3m, ready for installation, with standard on-off or dimmable power supplies for white light.

The RGB+W strips can be supplied with control via RF remote control, wall touch panel, dmx, dali, and with the Google Assistance, Alexa and Tuya apps for smartphone control.

## accessories

opal  
cover  
CV-RP110/01-OP



front side-closed  
cap  
TP-RP110/01-T1



1

installation

3



secure the rear base  
of the profile to the wall  
with screws

2



clip the front  
of the profile

close  
the profile  
with the appropriate ones  
caps

The profiles are supplied cut to measure, maximum length 3m, complete with diffuser + caps and fixing clips.

Upon request, the profiles are supplied with LED strips chosen from White / Dynamic White / RGB / RGB+W and light control modules managed by the following systems:

TYPE LED	RF REMOTE CONTROL / PANEL	DMX	DALI	ALEXA/GOOGLE HOME/TUYA	PUSH	1-10V 0-10V
WHITE LED	✓	✓	✓	✓	✓	✓
DYNAMIC WHITE LED	✓	✓	✓	✓		
RGB LED	✓	✓	✓	✓		
RGB+W LED	✓	✓	✓	✓		



## LIGHTING WITH LED PROFILES



COBB FIBRE OTTICHE SRL

Via Nelson Mandela, 20 - Treviolo (BG) - Italy  
+39 035 0448601 - [info@fibre-ottiche.com](mailto:info@fibre-ottiche.com)

[www.fibre-ottiche.it](http://www.fibre-ottiche.it) | [www.configuratore.fibre-ottiche.it](http://www.configuratore.fibre-ottiche.it)