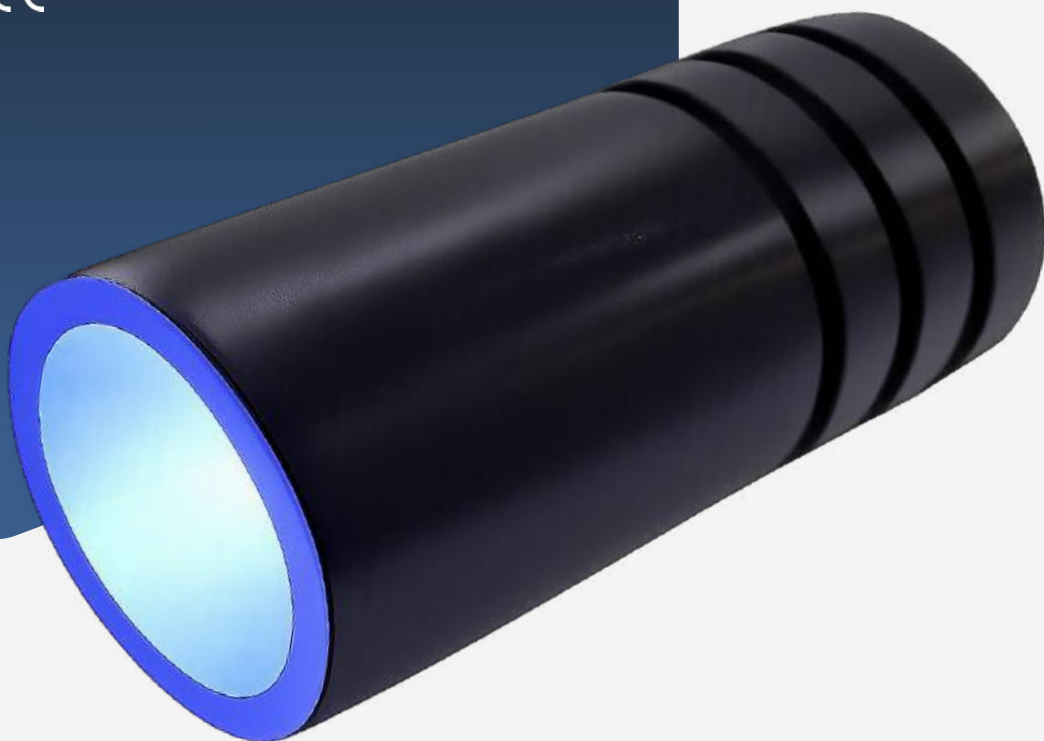


3W LED RGB light source

“BUTTON-LRGB/LED3”

CE

COBB
FIBRE OTTICHE



The LED LRGB-LED series light sources are produced for use with glass and PMMA optical fibers. These light sources allow you to control the emitted light and the color rotation speed, creating spectacular effects through radio frequency control. The light sources are supplied with an electronic device for connection to an unlimited number of LED light sources, maintaining color synchronization.

COBB FIBRE OTTICHE SRL

Via Nelson Mandela, 20 | 24048 Treviolo (BG) | Italy Tel. +39 035 0448601 - Fax +39 035 0448585
info@fibre-ottiche.com - www.fibre-ottiche.it

System components

Color control module



3W RGB led light source



(button not included in the supply)

Color control button functions

Short push: switch on or switch off

Long push: color selection/
automatic color rotation starts
after 20 seconds

Two short pushes: fixed color
choice in automatic color
rotation program

Technical specifications	Description
Led color	RGB (red, green, blue)
Power	3W
Cooling	fanless
Lifetime	50.000 hours
Standard connector input	30 mm
Protection rating (IP)	IP54 (IP65 on request)
Housing	delrin (POM)
Finish	black
Dimmable	yes
Power supply	100-240VAC / 50-60Hz

Fibre optic bundle connection

3W RGB LED light source



fibre optics bundle

common end



Insert the standard connector into the illuminator and secure it using the screw located on top of the illuminator.

Dimensions

