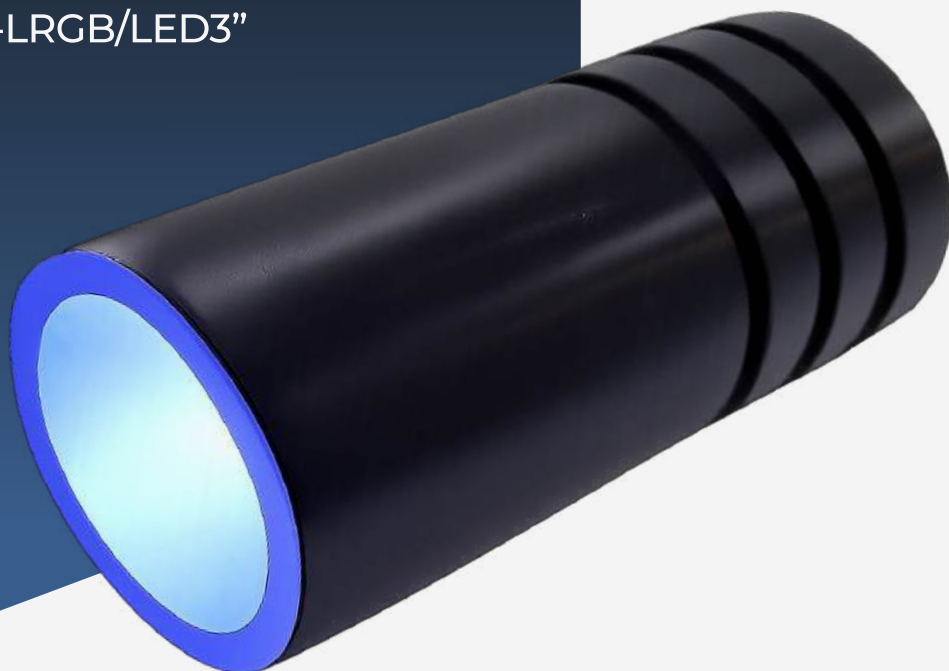


3W LED RGB light source

“DALI-LRGB/LED3”

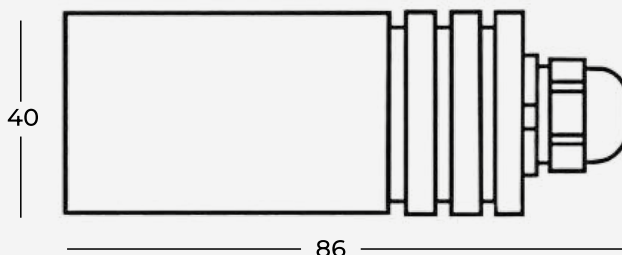
CE

COBB
FIBRE OTTICHE



The LED LRGB series light sources are produced for use with both glass optical fibers and synthetic optical fibers. The “LRGB” illuminators allow you to control the color of the emitted light and the speed of color rotation, creating scenographic effects via radio frequency remote control.

The LED light sources are already prepared, thanks to the integrated electronics, for connection to an unlimited number of illuminators, while maintaining color synchronization.



Dimensions

COBB FIBRE OTTICHE SRL

Via Nelson Mandela, 20 | 24048 Treviolo (BG) | Italy Tel. +39 035 0448601 - Fax +39 035 0448585
info@fibre-ottiche.com - www.fibre-ottiche.it

System components

COBB
FIBRE OTTICHE



Control functions via DALI signal

Electronic card interface for controlling and programming scenes via DALI signal



COBB FIBRE OTTICHE SRL

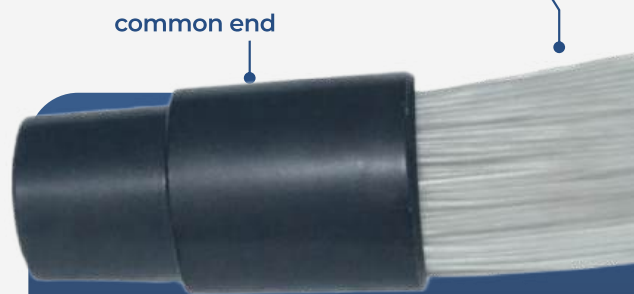
Via Nelson Mandela, 20 | 24048 Treviolo (BG) | Italy Tel. +39 035 0448601 - Fax +39 035 0448585
info@fibre-ottiche.com - www.fibre-ottiche.it

Technical specifications	Description
Led color	RGB (red, green, blue)
Power	3W
Cooling	fanless cooling
Lifetime	50.000 hours
Standard connector input	30 mm
Protection rating (IP)	IP54 (IP65 on request)
Housing	delrin (POM)
Finish	black
Dimmable	yes
Power supply	220V-240VAC/50-60Hz

3W RGB LED light source



fibre optics bundle



common end

insert the standard connector into the illuminator and secure it using the screw located on top of the illuminator

