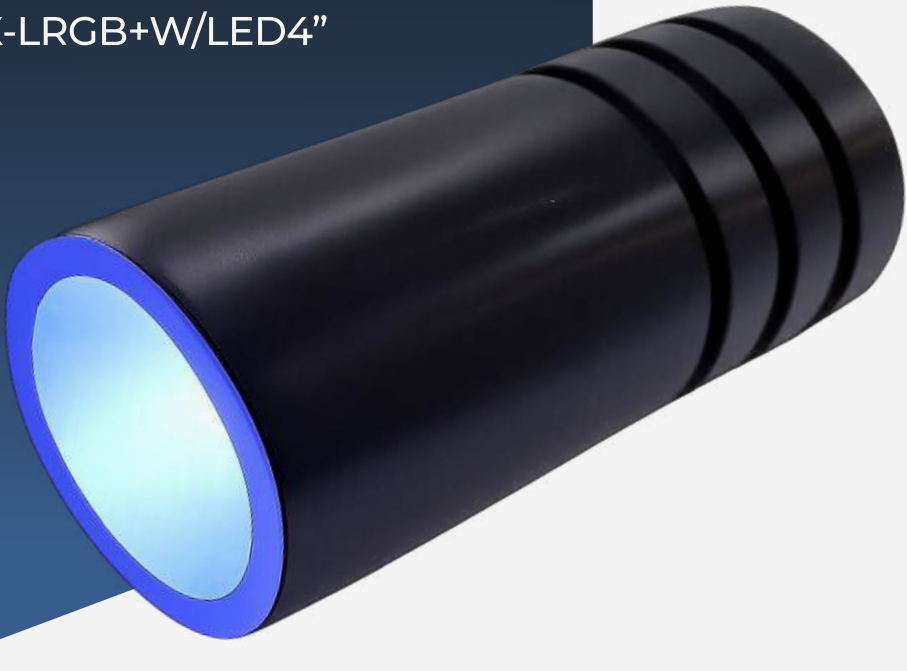


4W LED RGB+W light source

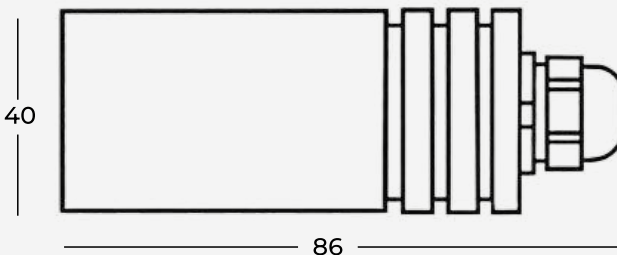


"DMX-LRGB+W/LED4"



The illuminators of the "Led LRGB+W" series are produced for use with both glass optical fibers and synthetic optical fibers. The "LRGB+W" Led light sources allow you to control the color of the light emitted and the speed of color rotation, creating scenographic effects via radio frequency remote control.

The Led light sources are already prepared thanks to the integrated electronics, for connection to an unlimited number of illuminators while maintaining the synchrony of the colors.



Dimensions

COBB FIBRE OTTICHE SRL

Via Nelson Mandela, 20 | 24048 Treviolo (BG) | Italy Tel. +39 035 0448601 - Fax +39 035 0448585
info@fibre-ottiche.com - www.fibre-ottiche.it

System components



(Controller not supplied by us)

DMX interface

4W RGB+W LED light source

Color control via DMX signal

Electronic card interface for the control and programming of scenographies through DMX 512 signal on four channels: red, green, blue and white

Power supply DMX interface



COBB FIBRE OTTICHE SRL

Via Nelson Mandela, 20 | 24048 Treviolo (BG) | Italy Tel. +39 035 0448601 - Fax +39 035 0448585
info@fibre-ottiche.com - www.fibre-ottiche.it

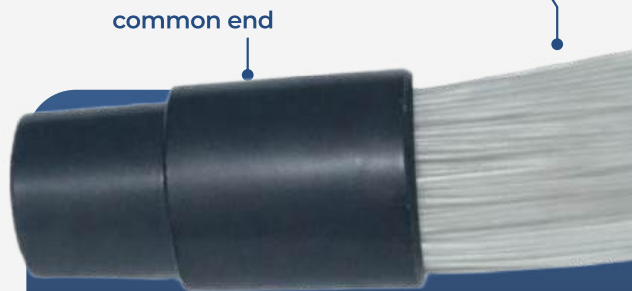
Technical specifications	Description
Led color	RGB+W (red, green, blue + white)
Power	4W
Cooling	fanless cooling
Lifetime	50.000 hours
Standard connector input	30 mm
Protection rating (IP)	IP54 (IP65 on request)
Housing	delrin (POM)
Finish	black
Dimmable	yes
Power supply	220V-240VAC/50-60Hz

4W RGB+W LED light source



common end

fibre optics bundle



insert the common end in the light source and block it through the screw set on the light source

