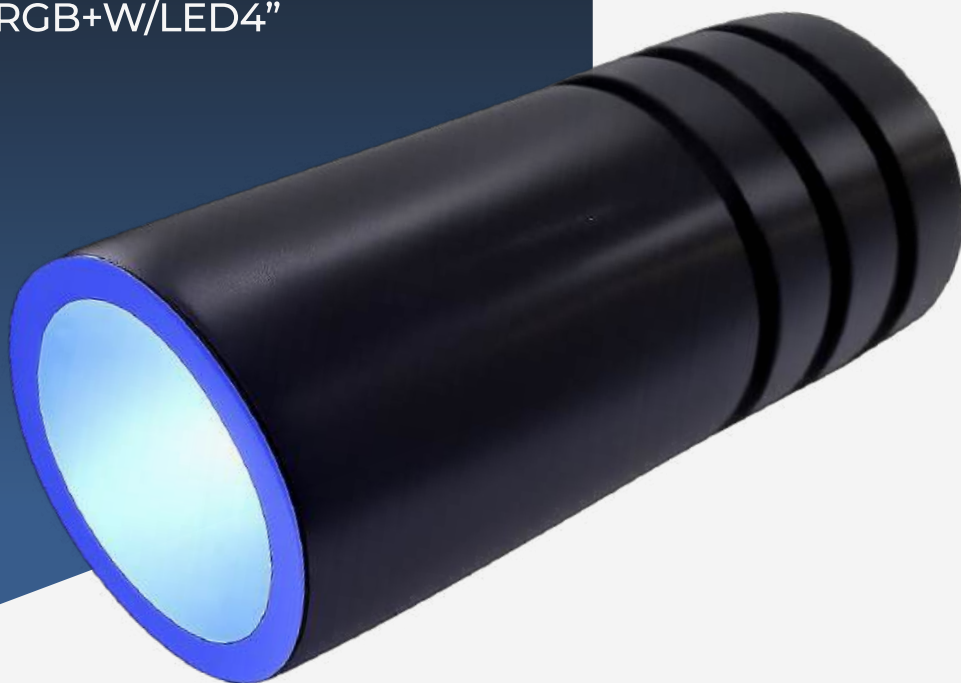


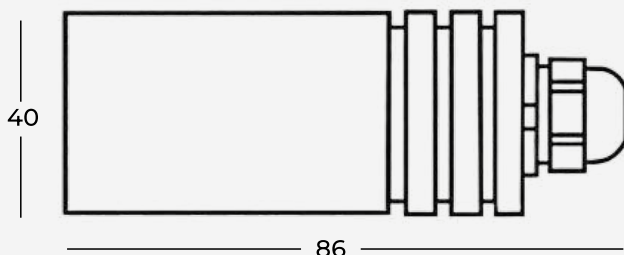
# 4W LED RGB+W light source



“PT-LRGB+W/LED4”



The LED LRGB+W series light sources are produced to be used with glass and PMMA optical fibers. These light sources allow you to control the emitted light and the color rotation speed, creating spectacular effects through radio frequency control. The light sources are supplied with an electronic device for connection to an unlimited number of LED light sources, maintaining color synchronization.



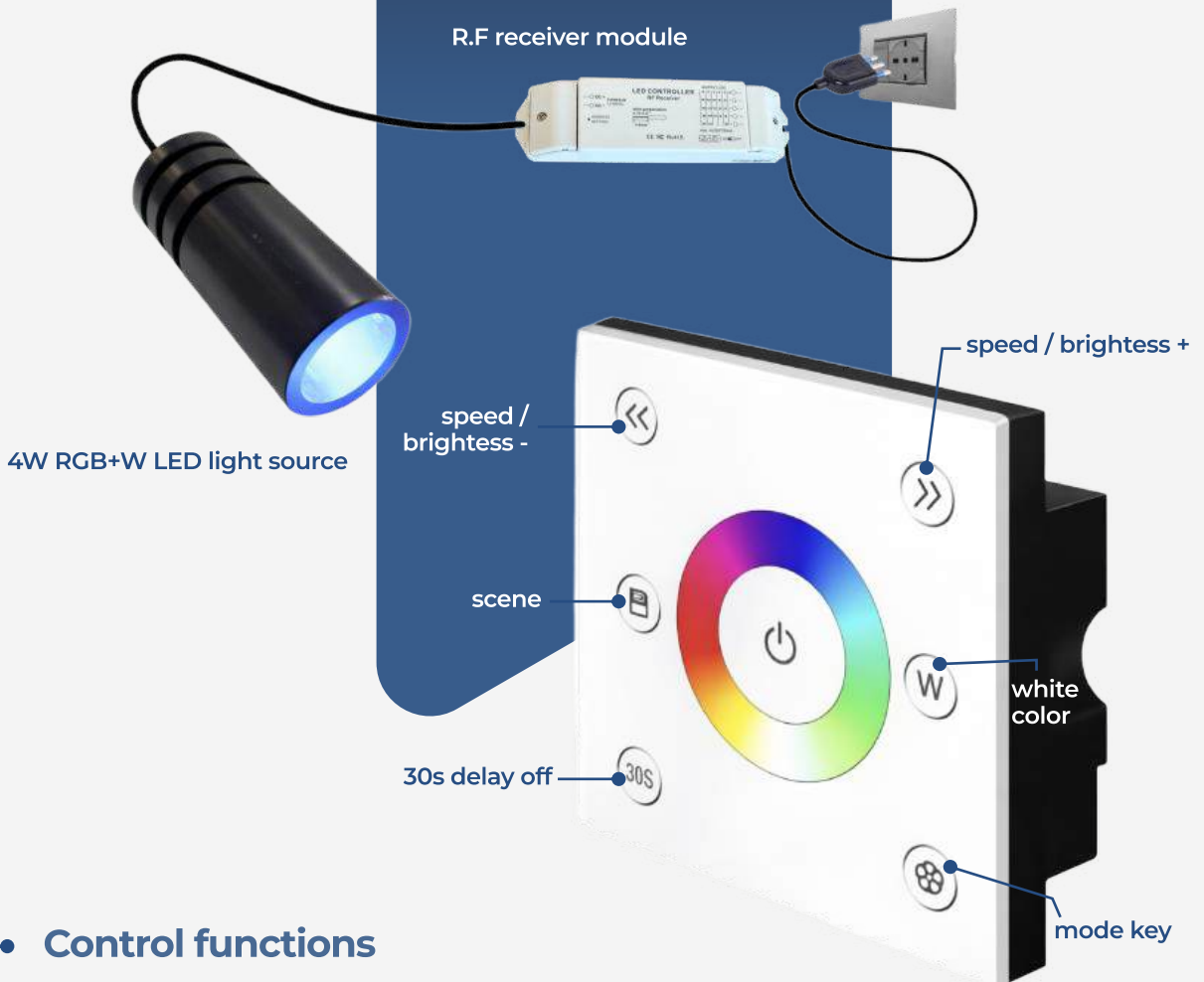
Dimensions

COBB FIBRE OTTICHE SRL

Via Nelson Mandela, 20 | 24048 Treviolo (BG) | Italy Tel. +39 035 0448601 - Fax +39 035 0448585  
info@fibre-ottiche.com - www.fibre-ottiche.it

# System components

**COBB**  
FIBRE OTTICHE



## Control functions

**Central ON/OFF button:** on or off for any function

**Programs:** 10 programs

**Speed / Brightness + :** the speed / brightness will increase speed or brightness when you touch the key each time

**Speed / Brightness - :** the speed / brightness will decrease speed or brightness when you touch the key each time

**Color ring:** touch and choose any color which you want

**White color button:** button to turn on the white color led

COBB FIBRE OTTICHE SRL

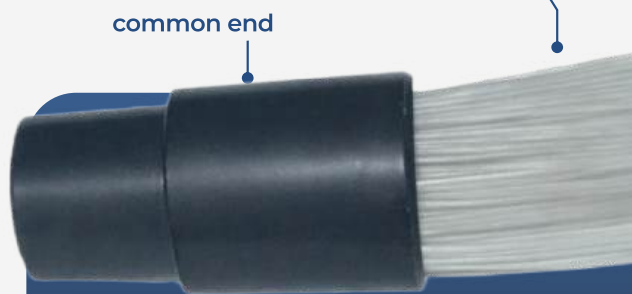
Via Nelson Mandela, 20 | 24048 Treviolo (BG) | Italy Tel. +39 035 0448601 - Fax +39 035 0448585  
info@fibre-ottiche.com - www.fibre-ottiche.it

Technical specifications	Description
Led color	RGB+W (red, green, blue + white)
Power	4W
Cooling	Fanless cooling
Lifetime	50.000 hours
Standard connector input	30 mm
Protection rating (IP)	IP54 (IP65 on request)
Housing	delrin (POM)
Finish	black
Dimmable	yes
Power supply	230V-50/60Hz

4W RGB+W LED light source



fibre optics bundle



common end

Insert the standard connector into the illuminator and secure it using the screw located on top of the illuminator.

