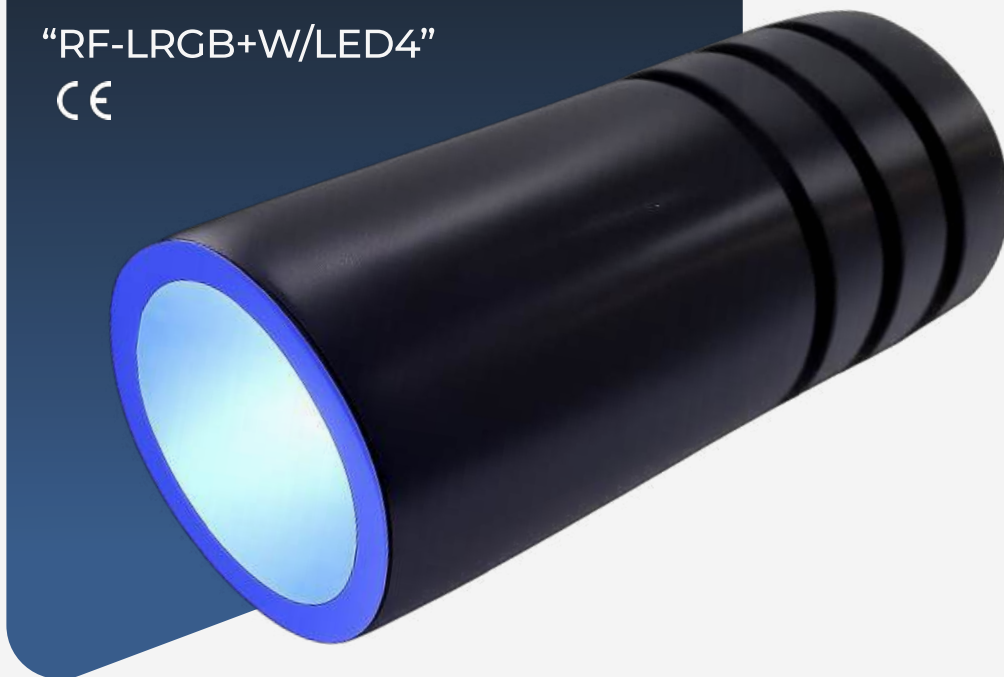


4W LED light RGB+W source

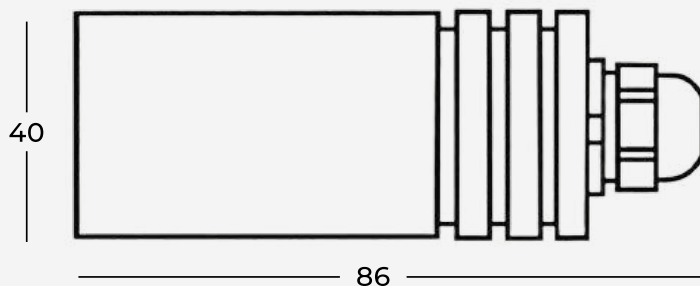
“RF-LRGB+W/LED4”

CE

COBB
FIBRE OTTICHE



The LED LRGB+W series light sources are produced for use with both glass optical fibers and synthetic optical fibers. The “LRGB+W” illuminators allow you to control the color of the emitted light and the speed of color rotation, creating scenographic effects via radio frequency remote control. The illuminators are already prepared, thanks to the integrated electronics, for connection to an unlimited number of illuminators, while maintaining the synchrony of the colors.



Dimensions

COBB FIBRE OTTICHE SRL

Via Nelson Mandela, 20 | 24048 Treviolo (BG) | Italy Tel. +39 035 0448601 - Fax +39 035 0448585
info@fibre-ottiche.com - www.fibre-ottiche.it

System components



Control functions

ON/OFF: on or off for any function

Programs: 8 programs

Speed / Brightness + : the speed / brightness will increase speed or brightness when you touch the key each time

Speed / Brightness - : the speed / brightness will decrease speed or brightness when you touch the key each time

Color ring: touch and choose any color which you want

White color button: button to turn on the white color led

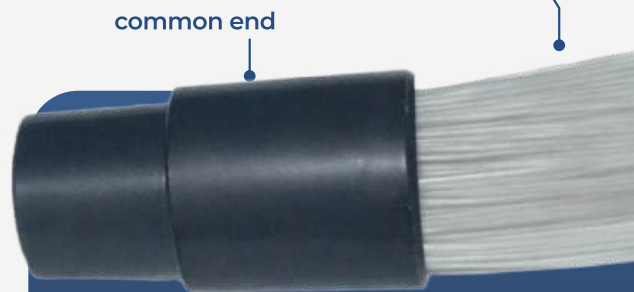
Zone control button: button to control different zones with one rf remote control or to change frequency of each single rf remote control

Technical specifications	Description
Led color	RGB+W (red, green, blue + white)
Power	4W
Cooling	fanless cooling
Lifetime	50.000 hours
Standard connector input	30 mm
Protection rating (IP)	IP54 (IP65 on request)
Housing	delrin (POM)
Finish	black
Dimmable	yes
Power supply	220-240VAC / 50-60Hz

4W RGB+W LED light source



fibre optics bundle



common end

insert the common end in the light source and block it through the screw set on the light source

