

**"LWH-LED9" SYSTEM : LED WHITE SOURCE WITH POWER SUPPLY**

The Led light sources LWH-LED9 Series are produced to be used with glass and pmma optical fibres.

The LWH-LED9 are available with three different white color temperatures:

warm white 3000° k

natural white light 4000° k

cold white 5500° k

The led white light sources are provided with a power supply to be connected directly to 110-240VAC.



**TECHNICAL FEATURES**

9W white LED high power

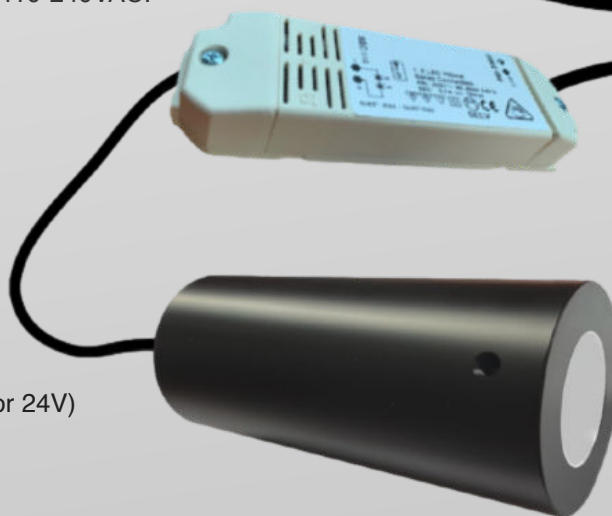
Fanless cooling

IP54 protection (IP65 on request)

Led lifespan 50.000 hours

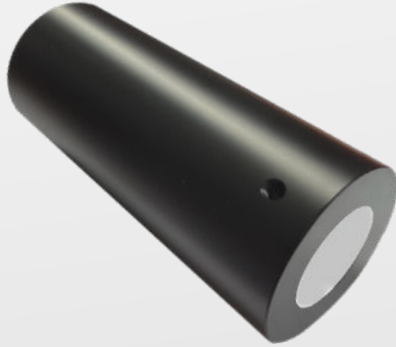
Supply voltage: 110V-50/60Hz

(Supply voltage on request : 12V or 24V)



**"LWH-LED9" SYSTEM'S COMPONENTS**

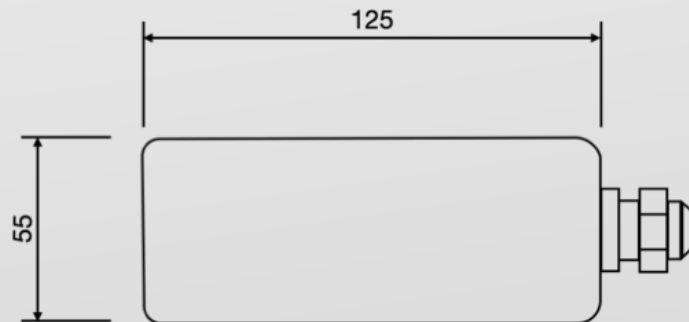
**9W WHITE LED LIGHT SOURCE**



**POWER SUPPLY**



**DIMENSIONS**



**LED LIGHT SOURCE - FIBRE OPTIC BUNDLE CONNECTION**



**9W LED LIGHT SOURCE**



**COMMON END**

**FIBRE OPTIC BUNDLE**



**INSERT THE COMMON END IN THE LIGHT SOURCE AND BLOCK IT THROUGH THE SCREW SET ON THE LIGHT SOURCE**