

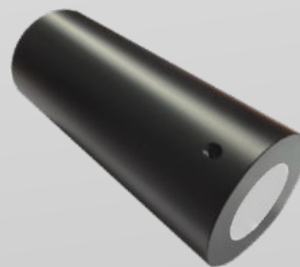


The led light sources in the "Led LWH" series are designed to be used with both glass optical fibers and synthetic optical fibers. The SMART version allows you to control the light color as follows:

- With the Tuya application, you can manage the lights from a smartphone or tablet, adjust the intensity, color, and programming.
- The "Intelligent Assistant Control" is compatible with Alexa and Google Assistant for voice control of the lights.
- It also includes a radio frequency touch remote for traditional control.
- It provides customized, practical, and efficient lighting for your home, office, wellness center, etc.
- It allows you to conveniently and intuitively control the lights with various control options.

**TECHNICAL FEATURES**

White LED light  
 Power 9W  
 Cooling without fan (fanless)  
 LED lifespan 50,000 hours  
 Illuminator protection IP54 (IP65 on request)  
 Mains power supply 110-240VAC / 50-60Hz  
 (12-24VDC power supply on request)

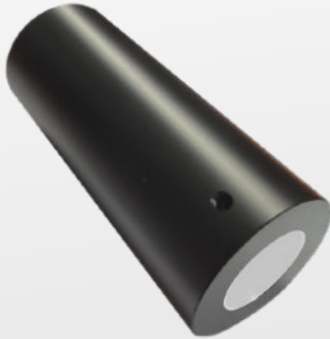


**LIGHT CONTROL VIA RADIO FREQUENCY REMOTE CONTROL**



**"LWH-LED9+RF/SMART" SYSTEM'S COMPONENTS**

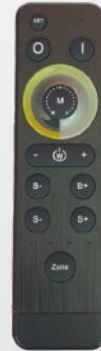
**9W LED LIGHT SOURCE**



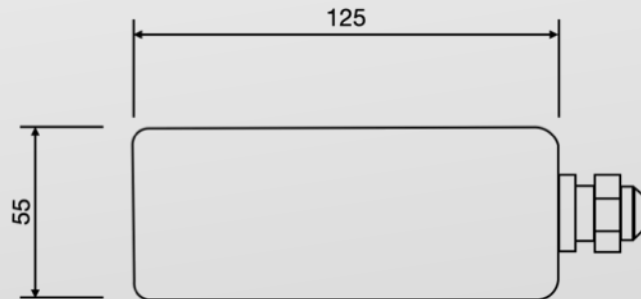
**RECEIVER MODULE  
RF SIGNAL**



**RF REMOTE CONTROL**



**DIMENSIONS**



**LED LIGHT SOURCE - FIBER OPTICS BUNDLE CONNECTION**



**9W LED LIGHT SOURCE**



**COMMON END FIBER OPTICS BUNDLE**



**INSERT THE COMMON END IN THE LIGHT SOURCE AND BLOCK IT THROUGH THE SCREW SET ON THE LIGHT SOURCE**